

4500A MILLS BOILER INSTALLATION INSTRUCTIONS

STEAM, OR WATER HEATING
FOR AUTOMATIC FIRING
WITH OIL OR GAS

DESIGNED AND TESTED ACCORDING TO A.S.M.E.
BOILER AND PRESSURE VESSEL CODE, SECTION IV
FOR MAXIMUM ALLOWABLE WORKING PRESSURE.
STEAM - 15 PSIG, WATER - 40 PSIG

FOR BURNER INSTRUCTIONS
SEE SEPARATE INFORMATION FURNISHED
WITH THE BOILER

TO STEAMFITTER

NOTE: READ THESE INSTRUCTIONS CAREFULLY.
THEY WILL SAVE YOU TIME IN ASSEMBLING
BOILER PROPERLY.

**THE SECTIONS IN THIS BOILER MUST BE
ASSEMBLED IN THE PROPER ORDER. READ
INSTRUCTIONS.**

THESE INSTRUCTIONS TO BE LEFT WITH THE BOILER FOR REFERENCE PURPOSES.

4500A BOILER INSTALLATION INSTRUCTIONS

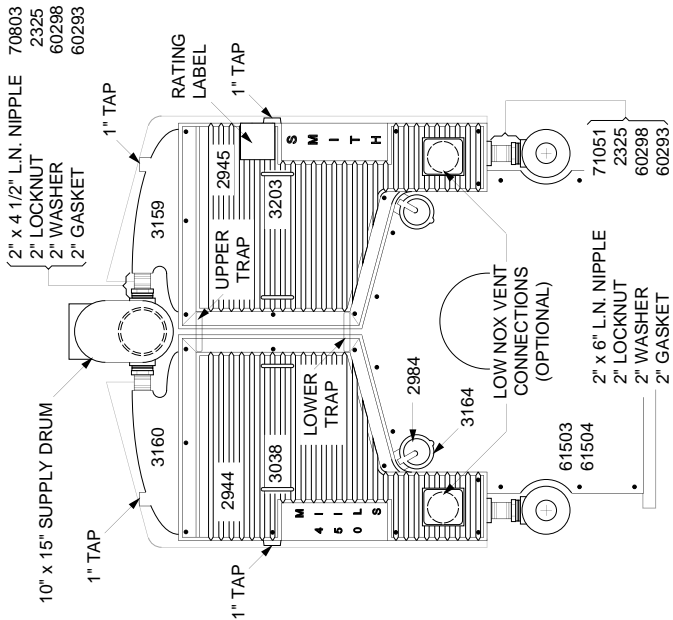


FIG. NO. 1A Steam Boiler - FRONT VIEW

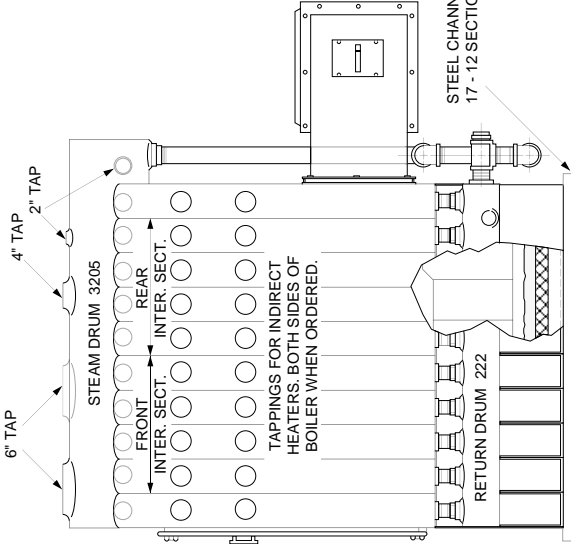


FIG. NO. 1B Steam Boiler - SIDE VIEW

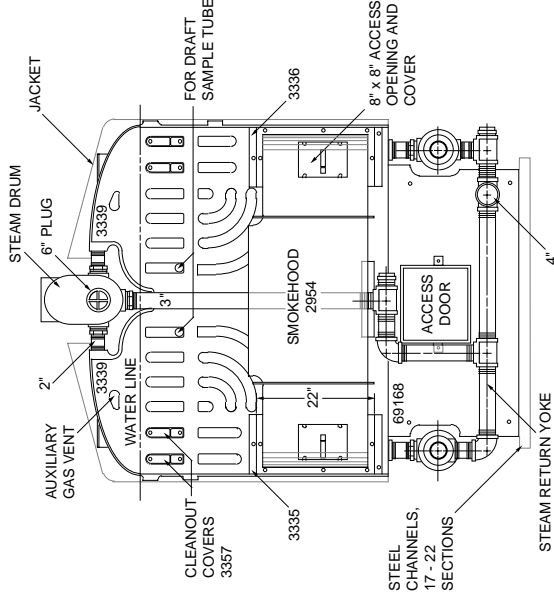


FIG. NO. 1C Steam Boiler - REAR VIEW

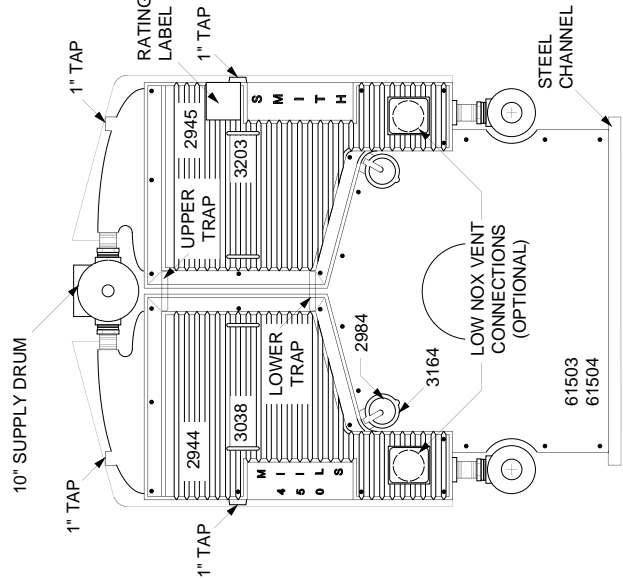


FIG. NO. 1D Water Boiler - FRONT VIEW

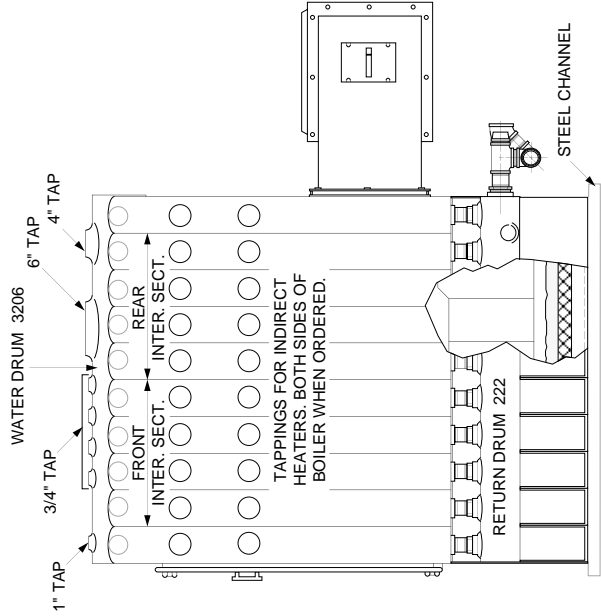


FIG. NO. 1E Water Boiler - SIDE VIEW

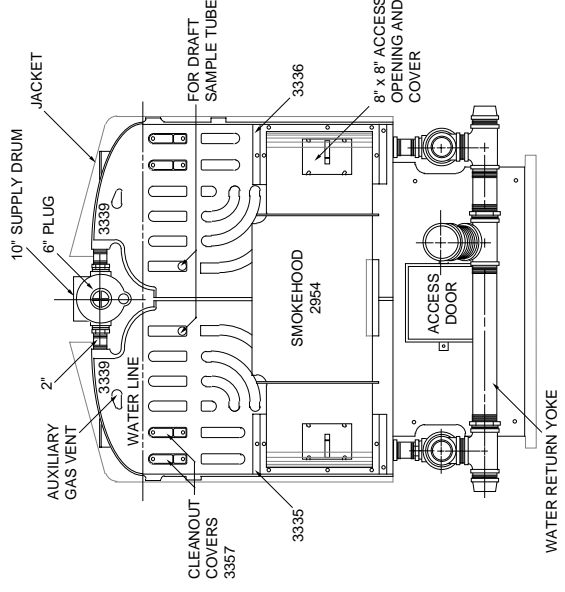


FIG. NO. 1F Water Boiler - REAR VIEW

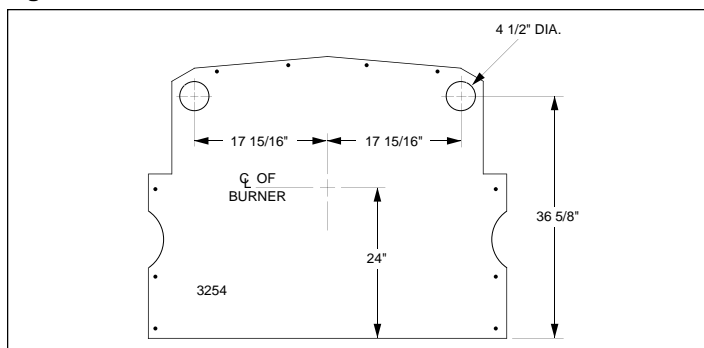
4500A BOILER INSTALLATION INSTRUCTIONS

Table 1 - List of Parts

COMPUTER NO.	DESCRIPTION	COMPUTER NO.	DESCRIPTION
	FOUNDATION		INTERMEDIATE
69939	Erecting Bars (2)	3653	Forward Intermediate Section
2851	C.I. Sidewalls - 3 Sect.-18" long	3654	Rear Intermediate Section
2852	C.I. Sidewalls - 4 Sect.-24" long		BACK
69168	Foundation back with access door	3339	Back Section (2 required)
2984	Observation Cover	3335	R. H. Smokehood Adapter
3164	Observation Cover Frame	3336	L. H. Smokehood Adapter
61503	Front Plate 19-1/2" hole	75003	Cleanout Cover Assembly
61504	Front Plate 12-1/2" hole	3358	Back Strap
	PLATE TO SECTION ASSEMBLY HARDWARE	72982	Cleanout Covers Installation
	5/16" brass stud (4)		SMOKEHOOD
	5/16" washers (4)	2952	Smokehood Elbow (2 required)
	5/16" hex nuts (4)	2953	Smokehood Cleanout Covers
	WINDBOX TO PLATE HARDWARE	2954	Smokehood Center Section (natural draft)
	J.C., WEBSTER & PREFERRED	2956	Smokehood Outlet Adapter
	7/16" x 1-1/2 studs (7)		19" x 19" (10-12 section)
	7/16" hex nut (7)	3250	Smokehood Outlet Adapter
3249	Cast Iron Lug (7)		24" x 24" (16-22 section)
69309	3" Steel Sub-Base Channels (16-22 Section) I.C. Only	73160	L. H. Elbow with dampers
	FRONT	73298	R. H. Elbow with dampers - Pref. Actuator
3159	Front Section (R. H.)	69029	Auburn Axial & Natural Draft
3160	Front Section (L. H.)	69029	Auburn Smokehood - not illustrated
3240	Lower Strap		LOCKNUTS AND NIPPLES
3241	Upper Strap	70803	2" x 4-1/2" L/N Nipple - Steam Supply
2945	Flue Door (R. H.)	71051	2" x 6" L/N Nipple - Return Drum
2944	Flue Door (L. H.)	71604	2" Locknut
60451	Flue Door Lining (top)	60293	2" Gasket
60452	Flue Door Lining (bottom)	60298	2" Steel Washer
3038	Flue Door Handle		ACCESSORIES AND TRIM
2929R	Flue Door Hinge (R. H.)	60858	5" Dip Tube
2929L	Flue Door Hinge (L. H.)	60859	6" Dip Tube
2932	Boiler Hinge	73002	Draft Sample Tube
2880	Hinge Support		
2881	Hinge Eccentric		
2930	Hinge Arm		
61624	Hinge Pin		
61205	Ball Bearing		
73009	FLUE DOOR FASTENING HARDWARE		
61706	7/16" X 2-1/4" Screw		
60884	palnut		
62098	1/2" washer		
	STRAP HARDWARE		
	7/16" x 1" cap screws		
	HINGE HARDWARE		
	5/8" x 2-1/4" cap screws (Eccentric)		
	3/8" x 1" jack screw		
	1/2" x 1-1/2" machine screw		

NOTE:
See TABLE 4 for number and location of sections.

Figure No. 1G



4500A BOILER INSTALLATION INSTRUCTIONS

TABLE OF CONTENTS

Illustration of Boiler Views	2
List of Parts	3
Table of Contents	4
General Information	4
Conformance to Codes and Regulations	4
Boiler Location	4
Chimney and Breeching	4
Combustion and Ventilation Air	5
Foundation Assembly	5
Supply Drum Assembly	6
Front and Back Section Assembly	6
Return Drum Assembly	7
Cleanout Cover	8
Draft Sample Tube	8
Intermediate Section Assembly	8
Locknut Nipples	9
Sealing the Boiler	9
Flue Door Assembly	11
Combustion Chamber	11
Return Yokes	12
Smokehoods (Natural Draft)	14
Smokehoods (Induced Draft, Auburn Axial)	14
Smokehoods (Induced Draft, Auburn)	15
Auxiliary Flue Gas Vent	19
Steam Trim	20
Water Trim	20
Cleaning Boiler Waterways	20
Jacket Installation	22
Maintenance Schedule	24
Safety	22
Warnings	23
Periodic Testing Recommended Checklist	24

1. GENERAL INFORMATION

The 4500A Series Mills Boiler can be either steam or water. Each section is constructed and hydrostatically tested for a maximum working pressure of 40 psi water (80 psi available) or 15 psi steam in accordance with "A.S.M.E. Boiler and Pressure Vessel Code, Section IV". High test sections are rated at 80 psig for water only.

This manual will assist in the assembly of the boiler. Please take the time to read this manual at least once prior to assembly. This will save time later.

2. CONFORMANCE TO CODES AND REGULATIONS

IMPORTANT

The installation and operation of this boiler must meet all local, state and federal codes and requirements of the authorities having jurisdiction.

All completed boilers shall satisfactorily pass the hydrostatic tests as prescribed by A.S.M.E., Code Section IV.

- a. Steam Boilers - The assembled boiler shall be subjected to a hydrostatic test of not less than 45 PSIG.
- b. Water Boilers - The assembled boiler shall be subjected to a hydrostatic test pressure not less than 1-1/2 times the maximum allowable working pressure.
- c. The required test shall not exceed the test pressure by more than 10 PSI.

3. BOILER LOCATION

The boiler should be installed on a level concrete floor or pad sufficient to support the weight of the boiler and accessory equipment.

Locate boiler close to the chimney to minimize breeching length but allow adequate clearance for piping, service and maintenance.

NOTE: If tankless water heaters are to be used, sufficient clearance must be provided for coil replacement.

4. CHIMNEY AND BREECHING

The breeching connection between the boiler and chimney should be as straight and short as possible. It should be pitched slightly upwards (1/4"/ft.) to chimney and the same area as the boiler outlet.

If extreme length, excessive number of turns or a reduction in area is necessary, consult your Smith representative for recommendations.

4500A BOILER INSTALLATION INSTRUCTIONS

5. COMBUSTION AND VENTILATION AIR

IMPORTANT

For good combustion and dependable operation, there must be sufficient supply of fresh air to the boiler room.

Air supply for the boiler room must include both combustion air and ventilation air. Permanent air openings shall have a minimum free area of 1 sq. ft. for every 2 million BTU per hour burned plus the required area for ventilation air.

The National Fuel Gas Code, A.N.S.I. Z223.1, Oil Burner Installation Standard ANSI/NFPA 31, or local codes must be adhered to for proper combustion and ventilation air requirements for oil and gas firing.

Forced air supplied to the boiler room must have the approval of local authorities and should provide a minimum of 30CFM/gal. of oil and 0.25CFM/MBH of gas burned.

A low NOx (Nitric Oxide) burner option is available on the 4500A Mills Boiler. Low NOx burners make use of 5" diameter holes on the right and left flue doors for flue gas recirculation (see Figures No. 1A & 1D).

6. FOUNDATION ASSEMBLY

NOTE: Some installers prefer to suspend the supply drum prior to assembling the foundation. We recommend you read both foundation assembly and supply drum assembly first and decide which will be easier for your installation.

The boiler foundation consists of a backend with an access door (73152), two front connecting straps (69939) and multiple side wall pieces. (Sidewalls are made up of combinations of 18" (2851) and 24" (2852) cast iron pieces depending on size of boiler).

Seal the joints between the foundation sections with a bead of RTV silicone to prevent the passage of air into the firebox. Bolt the foundation sidewalls together using 7/16" x 2" bolts, washers and nuts (located in X5 box) as per Table 2.

Table 2

PIECES EACH SIDE WALL	Number of Sections												
	10	11	12	13	14	15	16	17	18	19	20	21	22
18"	2	1	—	3	2	1	—	3	2	1	—	3	2
24"	1	2	3	1	2	3	4	2	3	4	5	3	4

(1) bolt, (2) washers and (1) nut are required for each slot in the sidewall section. Shims should be used where necessary to insure the straightest possible sidewall assembly. Each sidewall section is stamped "top" for your convenience and should be positioned with the flat side facing the inside of the boiler. See Figure No. 2.

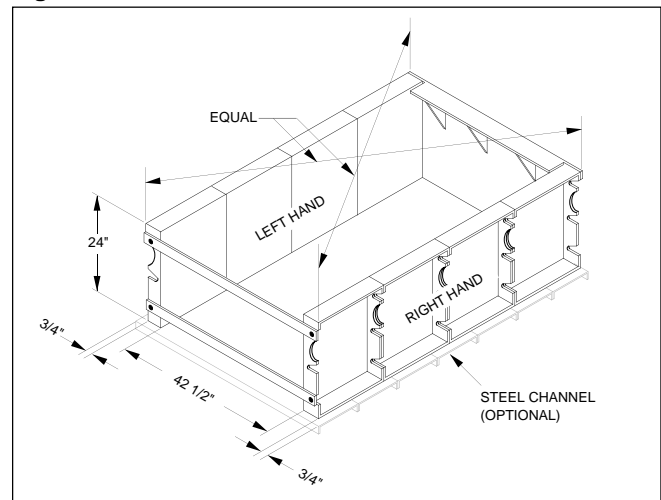
Position sidewall assemblies in desired position insuring a smooth level assembly. Attach foundation backwall to sidewalls with (6) 7/16" x 1-3/4" bolts, (12) washers and (6) 7/16" nuts (located in X5 box). Also, bolt the (2) front connecting straps to the sidewalls using (4) 7/16" x 1-3/4" bolts, (8) washers and (4) 7/16" nuts (located in X5 box), square up and level complete foundation as illustrated in Figure No. 2.

IMPORTANT

The correct and level installation of the boiler foundation is one of the most critical operations in assembling this boiler, if it is not **straight** and **level**, the sections will not assemble correctly.

Seal all joints between foundation and floor or base with RTV silicone, preventing excess air leakage into the combustion chamber.

Figure No. 2



NOTE: For boilers 16-22 sections using I.C. burners only; steel base channels are supplied and should be installed according to Table 3 and Figure No. 2 remember that entire foundation must be *straight* and *level*.

Table 3

Number of Sections						
16	17	18	19	20	21	22
8	9	10	10	11	11	12

4500A BOILER INSTALLATION INSTRUCTIONS

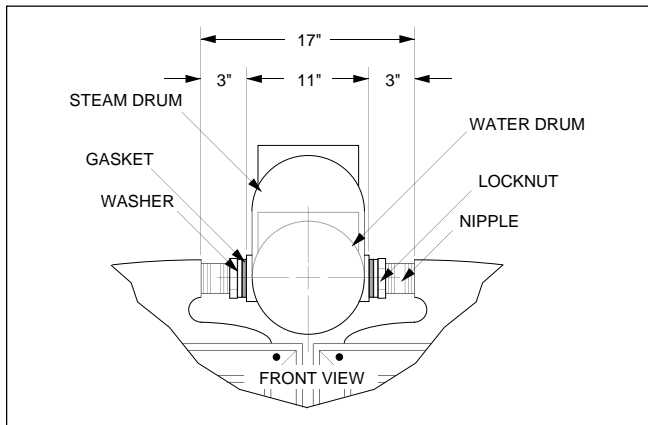
7. SUPPLY DRUM ASSEMBLY

NOTE: If the supply drum has been stored on the job so as to have been subjected to weather exposure, care should be taken to remove any dirt, mud, sand or other foreign materials from the interior of the casting and to thoroughly clean the threads of all tappings.

2" x 4-1/2" locknut nipples are supplied with Hy-Temp hydronic gaskets, steel washers and locknuts assembled at the factory (located in X5 box). Tapered threads are protected by plastic caps which must be removed just prior to nipple installation.

All nipple threads should be cleaned prior to installation with a nipple port cleaner. Install the running thread side of the locknut nipple into the supply drum. Nipple should be threaded into the drum until 3" of the entire nipple is all that remains protruding. A wood nipple gauge is supplied to assist you in achieving this 3" dimension. See Figure No. 3.

Figure No. 3



When the supply drum has been completely nipped, suspend it in position directly over the center of the foundation. This is usually accomplished with the use of two chain hoists anchored to either a pipe frame or ceiling construction.

With the drum in place, there should be a dimension of 59-1/2" (water) or 64-1/2" (steam) from the top of the foundation to the top of the supply drum.

8. FRONT AND BACK SECTION ASSEMBLY

(see CLEANOUT COVER, page 8)

NOTE: If sections have been stored on the job so as to have been subjected to weather exposure, care should be taken to remove any dirt, mud, sand or other foreign material from the interior of the casting.

It makes no difference in assembly whether you install the front section first or the back section first, as long as you install them where they belong.

Clean the threads of both the supply and return tapping of the right hand front section. Lift the section up and position it on the front of the foundation. Apply pipe dope to the tapered threads only. Thread the first supply drum nipple out of the drum and into the section. With nipple engaged in section, maintain a dimension of 3" between drum boss and section. Use the wood nipple gauge provided to insure this 3" dimension.

NOTE: Do not tighten locknuts at this time.

IMPORTANT

If this 3" dimension is not maintained throughout the assembly of this boiler, it will not line up as you proceed and disassembly and re-alignment will be required.

Line up the bottom of the section on the foundation maintaining 2-3/4" from the center of the return drum tapping of the section to the front of the foundation sidewall. See Figure No. 4.

Repeat this same procedure for the left hand front section.

With both sections in place and centered on the foundation, install both the upper and lower front connecting straps with the (4) 7/16" x 1" hex head cap screws (located in X1A box).

Recheck the alignment of the front sections on the foundation and brace same in place by some substantial means. Figure No. 4.

Assembly of the back sections is the same as that of front sections except there is only one (lower) back connecting strap.

With both back sections in place, check alignment insuring supply drum to be level and sections to be in center of foundation. It may be necessary to place wooden wedge between back section and foundation backwall to assist in leveling the drum. Brace these sections in place. See Figure No. 4. At this time, review step 14 on page 10. It may be easier to begin rope installation before all sections are in place.

4500A BOILER INSTALLATION INSTRUCTIONS

9. RETURN DRUM ASSEMBLY

NOTE: The same procedure used to insure that the supply drum and front and rear sections were clean of foreign material should be used to clean return drums.

The return drums (222) are 8" round drums which are the same for both steam and water. Two drums are required for each boiler.

Install the running thread of the 2" x 6" locknut nipples into the return drum as far as possible by hand. Back the first and last nipple out of the drum until 4-1/2" of the nipple is protruding from drum. See Figure No. 5.

Place return drum along side of boiler insuring the 5" tapping in the end of the drum is at the back of boiler.

Apply pipe dope to the **tapered** threads of the first and last nipple. Lift drum and thread nipples into front and rear sections. Tighten nipple into section only maintaining 4-1/2" between bottom section and return drum boss. See Figure No. 6.

Repeat the same procedure for second return drum installation.

When both return drums are securely connected to both the front and rear section, the supply drum has also been connected to the front and rear sections, and at least four intermediate sections have been installed, remove the braces holding up the sections.

NOTE: We strongly recommend continuing to support the supply drum until both front, both back, and several intermediate sections have been installed and their locknuts hand tightened. Removal of supports before this stage can result in the boiler suddenly squatting down as a result of bumping or vibration.

Periodically check alignment for square, level assembly.

Figure No. 4

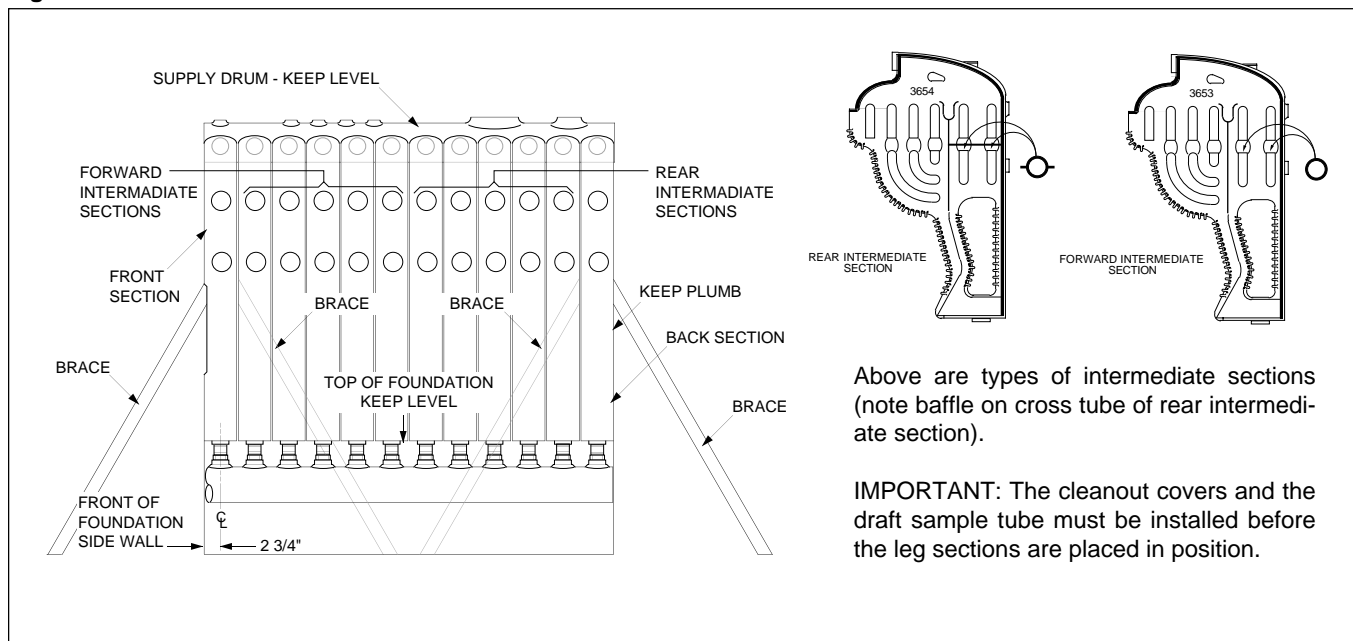


Figure No. 5

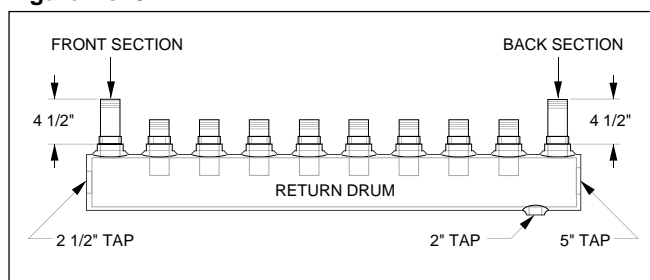
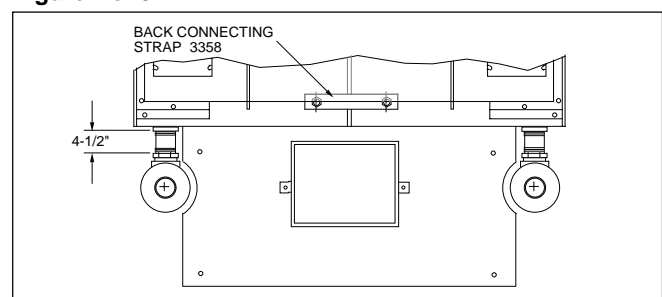


Figure No. 6



4500A BOILER INSTALLATION INSTRUCTIONS

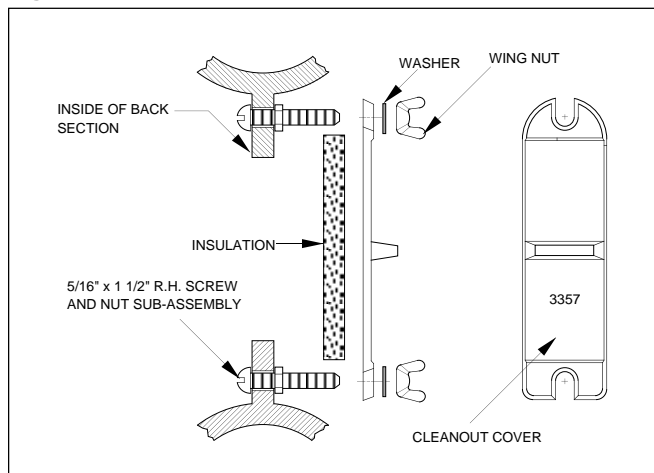
10. CLEANOUT COVER INSTALLATION

The four cleanout covers and insulation with hardware furnished must be installed while the inside of the back section is accessible. See rear view of back section on Page 2 and study Figure. No. 7 of the cleanout cover installation below.

Assemble 5/16" x 1-1/2" screw and nut assembly only and tighten securely (located in X1A box).

Place the insulation and cleanout cover against the back section and assemble washers and wing nuts.

Figure No. 7



11. DRAFT SAMPLE TUBE (See rear views, Page 2)

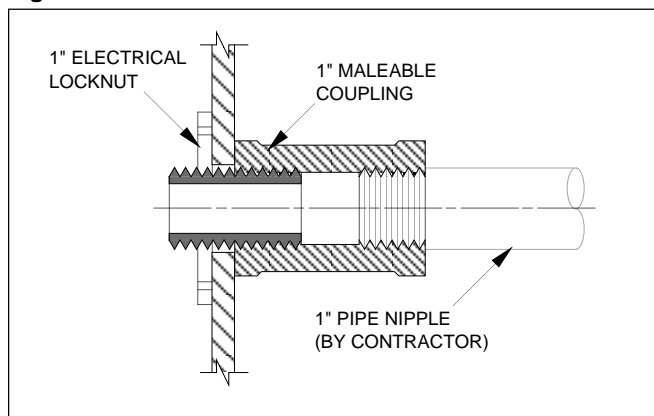
IMPORTANT

The draft sample tube must be installed in the back section prior to installing the rear intermediate sections.

A knock-out is provided in the webbing of the back section so that the draft sample tube (73002) may be installed in either the right or left hand back section, depending upon control panel location.

Punch out the knock-out with a ball peen hammer and install sample tube as illustrated in Figure No. 8.

Figure No. 8



12. INTERMEDIATE SECTION ASSEMBLY

IMPORTANT

There are two different types of intermediate sections used in the assembly of this boiler. The correct location of these sections is critical to its operation.

Rear intermediate sections are plainly marked for positive identification with a large cast-on name plate reading "rear intermediate", also a cast-on baffle on the cross tube and orange paint spotted on the outside of the section near the supply boss. Rear intermediate sections may be identified by a raised spot on each side of both supply and return bosses as well as a short horizontal rib on each side of the lower boss on the side of the section. See Figure No. 4

If care is taken in stacking these two types of intermediate sections in separate rows, the chance of installing a section in the wrong location will be nil. See Table 4 for correct locations.

IMPORTANT

All sections must be clean of any foreign material prior to assembly. All threads must be cleaned and pipe dope applied to each nipple prior to assembly. **Tapered threads only.** Do not use pipe dope on running threads.

Fill the pockets and the spaces between the section and the foundation of back section with insulating cement. See Figure No. 9 for location of spaces to be filled.

Take a rear intermediate section and apply insulating cement to the pockets. Place a sufficient quantity of insulating cement on the top of the foundation to insure a good air tight seal between section and foundation.

IMPORTANT

Proper sealing of boiler with insulating cement is important for efficient boiler operation. Leaks allow excess air to enter boiler.

Lift the section into place next to the back section. Engage the supply drum nipple into the section securely, maintaining a 3" dimension between drum and section. Use the wood nipple gauge supplied.

NOTE: A small pinch bar is a convenient tool for positioning the sections to line up supply drum nipples to tapping. Do not tighten locknuts at this time.

Turn return drum nipple out of drum and into section securely. As long as the return drum is **level** and a dimension of 4-1/2" was made when drum was put in position, there is no reason to measure each **return** drum nipple after assembly. Do not tighten locknut nipples at this time.

Install and connect another rear intermediate section opposite the one just installed in exactly the same manner making sure to fill the pockets and seal the spaces with insulating cement.

4500A BOILER INSTALLATION INSTRUCTIONS

Continue assembling the boiler in this manner. As each full section (2 halves) is erected, the joints between sections in the area under the supply drum should be sealed. Access to this area from the inside will be somewhat restricted when all sections are in place. See Figure No. 9.

The joints between sections under the supply drum should be sealed using the rope insulation furnished with the boiler. Lay the rope over the joint and then pack gently into the space between the beads of the sections taking care not to force the rope past the beads. Applying insulating cement over the rope so as to fill the space flush with the outside line of the section. See Figure No. 9. The exterior joint between the sections can then be sealed after all sections are connected in place.

As the sections are erected, the longitudinal joint directly under the supply drum should be sealed by placing the narrow strips of insulation board over the joint and cover with a layer of insulating cement extending the full width of the strip. This cement should extend far enough to join with the cement between the sections. See Figure No. 9.

Continue to install the remainder of the intermediate sections in the same manner already described except for the last three forward intermediate sections. These sections must be positioned with the beads properly spaced before the nipples are engaged into the sections.

13. LOCKNUT NIPPLES

IMPORTANT

Before commencing to seal hydronic gaskets and tighten locknuts, read this entire section on locknut nipples and then follow the instructions given in every detail.

With all sections in place, go over the entire boiler retightening all nipples into the **sections**.

Hand tighten all locknuts just tight enough to cause the hydronic gasket to become tight to the drum boss. See Figure No. 10.

Once locknut is hand tight, use a locknut wrench to tighten each locknut approximately 1-3/4 turns or until the distance from the boss to the washer is approximately 3/32". The outside diameter of the hydronic gasket should be roughly even with the outside diameter of the washer at this point which indicates a proper seal has been made. See Figure No. 11.

Plug all open tapings and hydrostatically test for leaks by applying water pressure of no more than 1-1/2 times the specified maximum working pressure.

Leaks around hydronic gasket can be stopped by tightening the locknut approximately 1/8 of a turn at a time until the leak stops.

14. SEALING THE BOILER

After all sections are in place and connected to both the supply and return drums, go over the entire boiler and complete the sealing of joints using the rope insulation and cement as shown in Figure No. 9.

Particular care should be taken to seal the joints between the bottoms of the sections and the top of the foundation in the rear as well as on the sides.

The vertical joints between both the front two and the rear two half sections must be completely sealed. Rope insulation should be placed in the vertical opening between both halves, and covered with insulating cement.

Table 4 - Number and Location of Sections

Casting Number	Description	Number of Sections in Boiler													
		10	11	12	13	14	15	16	17	18	19	20	21	22	
RH-3159 LH-3160	Front Section	1	1	1	1	1	1	1	1	1	1	1	1	1	
3653	Foward Intermediate Section	4	4	5	5	6	6	7	7	8	8	9	9	10	
3654	Rear Intermediate Section	4	5	5	6	6	7	7	8	8	9	9	10	10	
3339	Back Sections	1	1	1	1	1	1	1	1	1	1	1	1	1	

NOTE: Where one section is indicated in the table, two half sections are required since this is a split section boiler. If no distinction is made between "Right Hand" and "Left Hand" in the column listing "Casting Number", the half sections are suitable for use either right hand or left hand

4500A BOILER INSTALLATION INSTRUCTIONS

Figure No. 9

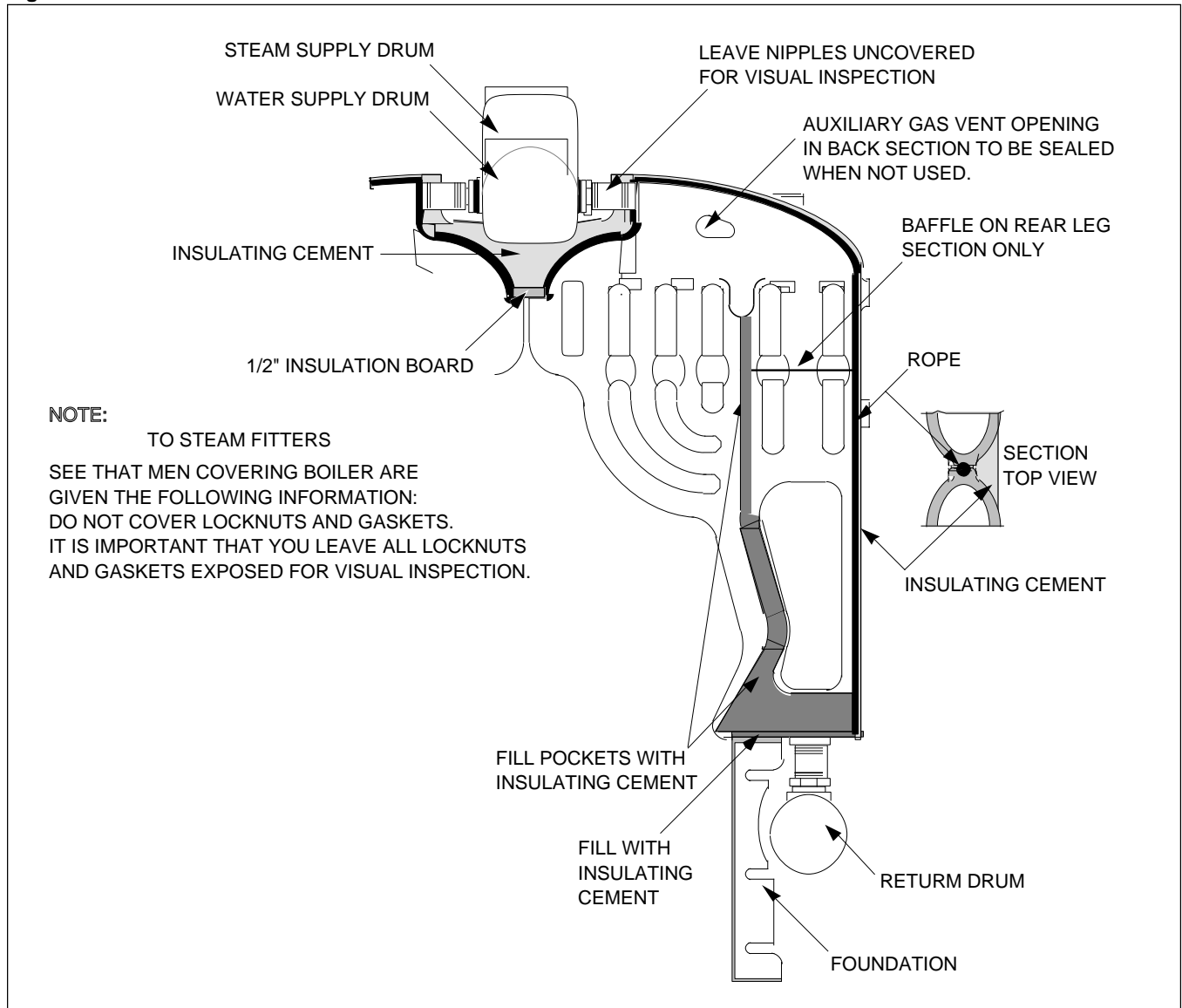


Figure No. 10

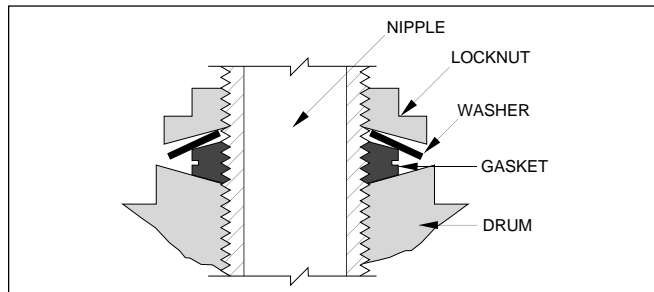
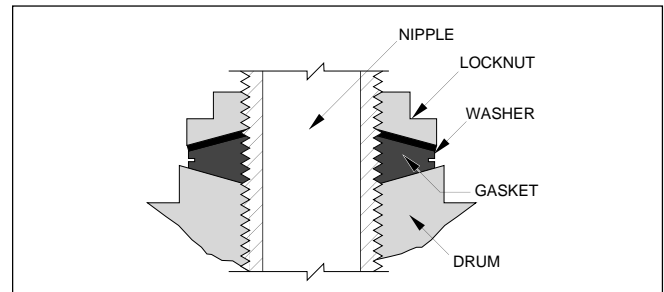


Figure No. 11



4500A BOILER INSTALLATION INSTRUCTIONS

15. FLUE DOOR ASSEMBLY

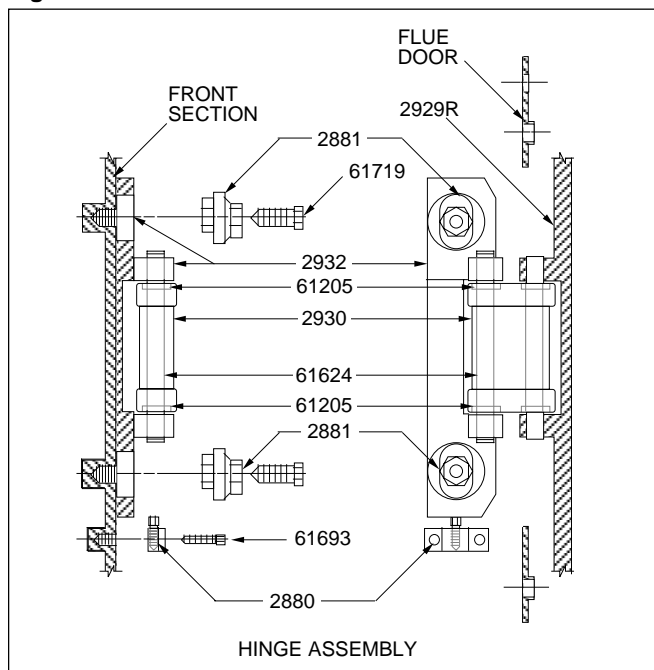
There is both a right hand and left hand flue door hinge assembly required for this boiler. The right hand hinge is marked "Smith" and the left hand is marked "450 Mills". Both of these markings are cast-on the hinges.

Both hinges should be assembled to the front sections as complete assemblies. See Figure No. 12 for hinge assembly break down.

Bolt the two hinge supports (2880) in place on the front sections using the 3/8" x 1" hex head cap screws. Secure the correct hinge assemblies to the front sections using the 5/8" x 2-1/4" hex head cap screws (located in X1A box).

NOTE: The boiler hinges should be plumb and approximately parallel to the outside edges of the sections.

Figure No. 12

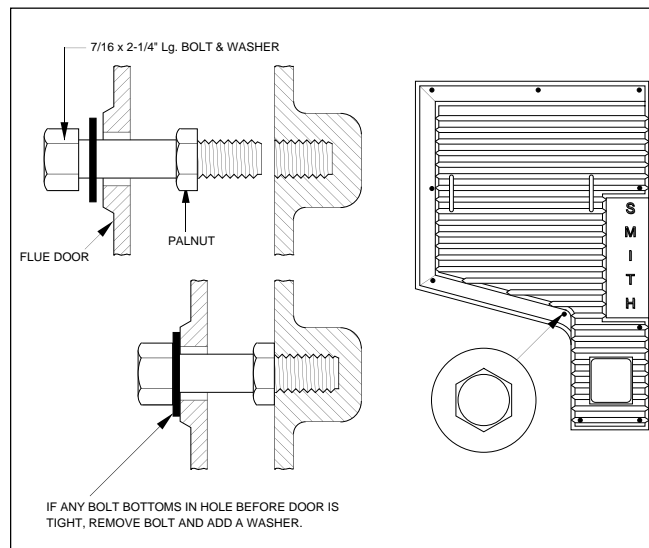


Before placing the flue door on the front section, pre-assemble all the 7/16" x 2-1/4" special bolts and pal nuts (located in X2 box) to each flue door as illustrated in Figure No. 13.

Swing the hinge assemblies to the open position. Lift flue door into position against front section and hold in place by loosely screwing (2) or (3) bolts into the section.

Close boiler hinge against flue door and assemble to door with (2) 1/2" x 1-1/2" flat head screws through the (2) center bolt holes.

Figure No. 13



Loosen the bolts used to hold door to section and open door. Fasten third flat head screw to boiler hinge and flue door assembly. Tighten all bolts.

Adjust the flue doors so that, when closed, the gasket on the door should seat squarely on the compression bead of the front section. First, make the vertical adjustment by using the jack screw under the boiler hinge support, lining up the outside top edge of the gasket to the compression bead. Next, loosen the 5/8" cap screw slightly and turn the eccentrics to accomplish the horizontal adjustment. See Figure No. 12.

When adjustment of flue door is satisfactory, tighten all nuts, bolts and screws. Fasten flue door in the closed position against the section tightening all bolts.

Repeat the same procedure for mounting the second flue door.

16. COMBUSTION CHAMBER

The combustion chamber should be installed at this time. A separate catalog covers the installation of the combustion chamber and should be referred to at this time.

4500A BOILER INSTALLATION INSTRUCTIONS

17. RETURN YOKES

Water Return Yoke (See Figure No. 14):

IMPORTANT
Be sure to apply pipe dope to the **tapered** threads of the locknut nipple only. All Standard nipples require pipe dope. Follow instructions already given when assembling the return yoke.

Assemble 5" x 4" hex bushing, 4" x 3" pipe nipple and 4" standard tee. Screw the 5" tapping in the return drum securely. Align assembly with the branch of the 4" tee facing downward. Repeat same procedure for opposite return drum.

After assembling a 4" x 3" pipe nipple into the branch of a 4" standard tee, screw this sub-assembly into the branch of the 4" tee already assembled to the left hand return drum. Align tee to run parallel with back of the boiler.

Repeat the same procedure for the right hand return drum except using a 4" locknut tee in place of standard tee. Align running threads of tee toward center of boiler and parallel with back of boiler.

Screw running thread of 4" x 36" locknut nipple into the locknut tee of right hand drum as far as possible, without applying pressure to the hydronic gasket.

Assemble the 4" x 7" locknut nipple into the running thread of the 4" x 4" x 6" locknut tee until only 5" of the locknut nipple is showing. Make this sub-assembly tight to the left hand return drum tee.

Back the 4" x 36" locknut nipple out of the 4" tee and into the 4" x 4" x 6" locknut tee until tight. Slight alignment adjustments of the left hand or right hand return drum tees may be required to insure parallel alignment with the back of the boiler.

Attach both the 6" x 6" pipe nipple and the 6" 45° elbow to the 4" x 36" locknut nipple. The 6" 45° elbow may be rotated until the face of the 6" 45° elbow is plumb.

Tighten all locknut joints as per instructions under section "Locknut Nipples".

Screw 4" close nipples and 4" pipe caps into both the right hand and left hand return drum tees.

IMPORTANT
If the vertical pipes of the return yoke are not plumb or the horizontal pipes level, the assembly is incorrect and should be corrected.

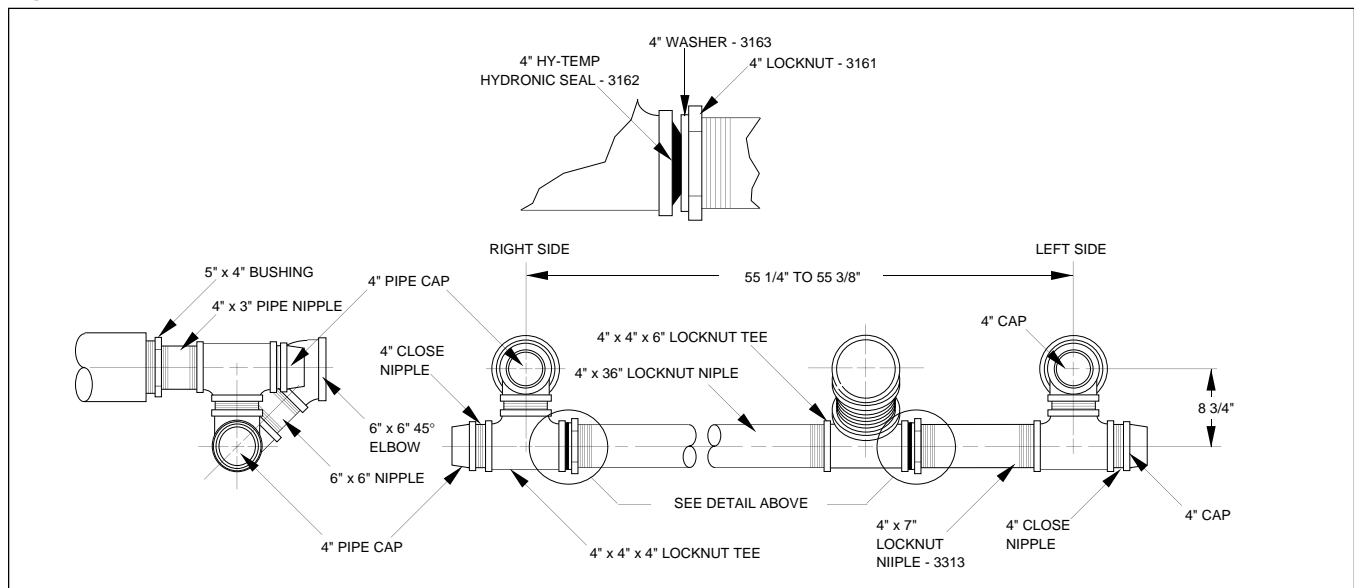
Steam Return Yoke (See Figure No. 15):

IMPORTANT
Be sure to apply pipe dope to the tapered threads of locknut nipples only. All standard nipples require nipple compound. Follow instructions already given for the correct procedure for sealing hydronic gaskets.

Assemble the 5" x 3" hex bushing, 3" x 3-1/2" pipe nipple, 3" standard tee. Add a 3" close nipple and pipe cap to the 3" tee. Screw a 3" x 4-1/2" pipe nipple with a 3" 90° elbow into the branch of the 3" tee. With all joints tight, screw entire sub-assembly (A) into the 5" tapping of the right hand return drum until tight. Make sure that the branch of the tee is straight up and down and the 90° elbow faces the center of the boiler.

Repeat the same procedure for sub-assembly (E) except in place of 3" 90° elbow, use a 3" standard tee with 3" close nipple and pipe cap. Again, with all joints tight, make sure that the branches of both tees are straight up and down, while the run of the bottom tee is parallel with the back of the boiler. The pipe cap must be on the left side of the boiler.

Figure No. 14



4500A BOILER INSTALLATION INSTRUCTIONS

Makeup sub-assembly (B) using a 3" locknut tee and the 3" x 12-1/2" pipe nipple. Screw this assembly into the 90° elbow in the right hand return drum and tighten. Insure that the branch of the locknut tee faces up.

Screw the running threads of the 3" x 26-1/2" locknut nipple (C) all the way into the tee just assembled, but not far enough to compress the gasket.

After assembling the 3" x 3" x 4" tee securely to a 3" close nipple, thread this sub-assembly (D) into the tee of the left hand return drum. Tighten while insuring the face of the 4" branch is both plumb and facing away from the boiler.

Back the 3" x 26-1/2" locknut nipple out of the locknut tee and into the 3" x 3" x 4" tee. Check alignment to insure assembly is as parallel with back of boiler as possible.

Sub-assembly (F) should consist of the 3" x 14" pipe nipple with a 3" 90° elbow on one end. Screw the other end into the branch of the 3" locknut tee already assembled.

Screw the running threads of the 3" x 47" locknut nipple (H) all the way into the bottom tapping of the supply drum but do not compress the hydronic gasket.

Assemble the running threads of the 3" x 7" locknut nipple into the 3" locknut tee not yet used. Add the 3" close nipple and pipe cap to opposite side of tee. Thread this sub-assembly (G) into the 90° elbow securely.

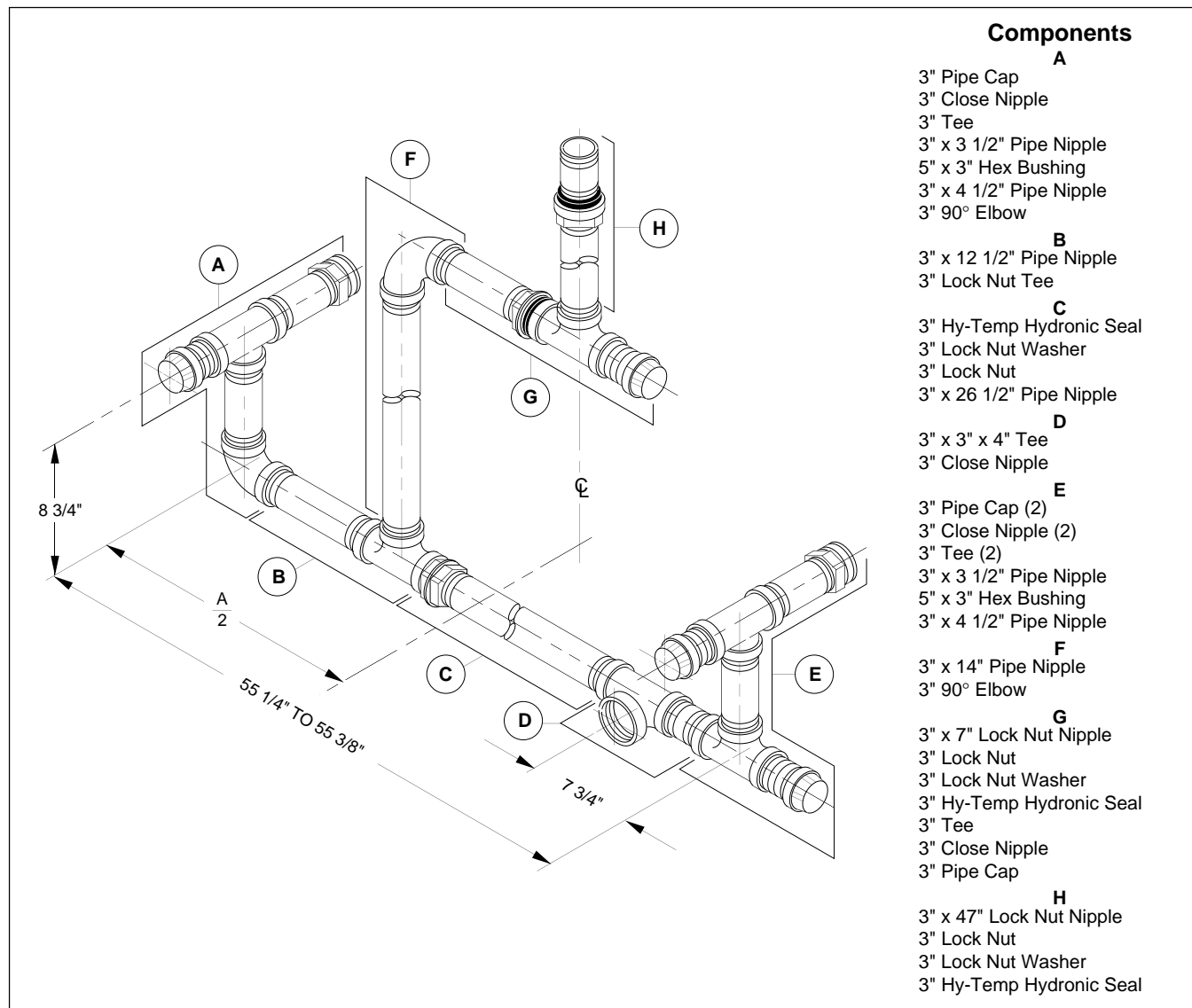
Back the locknut nipple out of the supply drum and into the branch of the locknut tee. (By rotating the 3" locknut tee on the running threads and slightly turning the 90° elbow, this assembly should end up completely plumb.)

IMPORTANT

With all joints tight, except gasketed joints, the vertical pipes should be plumb and horizontal pipes level. If this is not true, correct at this time.

Tighten all locknut joints per instructions under section "Locknut Nipples".

Figure No. 15



4500A BOILER INSTALLATION INSTRUCTIONS

18. SMOKEHOODS (NATURAL DRAFT)

See Figure No. 16 for exploded view of complete natural draft smokehood assembly.

A piece of insulating rope 1/4" thick and 56" long must be affixed to both the right hand (3335) and the left hand (3336) smokehood adapters prior to installation.

NOTE: A small amount of furnace cement placed randomly in the groove will hold the rope in place long enough to mount adapter.

Line up the appropriate frame with the opening in the back section and secure in place using (3) 7/16" x 2-1/2" machine bolts with a single washer (located in X3 box). Repeat same procedure for second adapter frame and seal both to back section using RTV silicone.

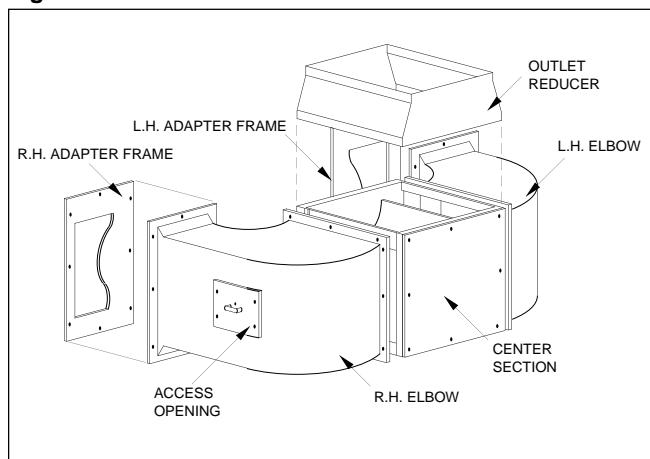
Loosely attach (3) 5/16" x 1" square head machine bolts, nuts and washers (located in X3 box) to the inside three holes of the smokehood elbow. Engage these (3) bolts with the slots on the inside portion of the smokehood adapter. Swing elbow up against adapter and secure in place with 5/16" x 1" bolts, nuts and washers. **Do not tighten nuts at this time.**

Repeat the same procedure for the opposite elbow, remembering not to tighten the nuts as yet.

The center section of the smokehood (2954) can be positioned either with the outlet facing up or to the rear away from the boiler.

Secure the center section to the elbows using 1/4" x 3/4" bolts, nuts and washers. Make sure the interior openings are lined up prior to tightening.

Figure No. 16



Align elbows to adapter frames and tighten all nuts. Seal all joints with RTV silicone.

An outlet adapter is required and supplied for certain size boilers. With adapter in place over center section, drill 9/32" diameter holes in the center section to match the holes in the adapter. Fasten with 1/4" x 3/4" bolts, nuts and washers.

19. SMOKEHOODS (INDUCED DRAFT, AUBURN AXIAL)

IMPORTANT

There are two ways this smokehood arrangement is supplied. That is with either shutter dampers or a barometric damper. Installation procedure is the same. For shutter damper information, see "Shutter Dampers Installation" section of this booklet (page 15).

A piece of insulating rope 1/4" thick and 56" long must be affixed to both right hand (3335) and the left hand (3336) smokehood adapters prior to installation.

NOTE: A small amount of furnace cement placed randomly in the groove will hold the rope in place long enough to mount adapter.

Line up appropriate frame with the opening in the back section and secure in place using (3) 7/16" x 2-1/2" machine bolts with a single washer (located in X3 box). Repeat same procedure for second adapter frame and seal both to back section using RTV silicone.

Loosely attach (3) 5/16" x 1" square head machine bolts, nuts and washers (located in X3 box) to the inside three holes of the smokehood elbow. Engage these (3) bolts with the slots on the inside portion of the smokehood adapter. Swing elbow up against adapter and secure in place with 5/16" x 1" bolts, nuts and washers. **Do not tighten nuts at this time.**

Repeat the same procedure for the opposite elbow.

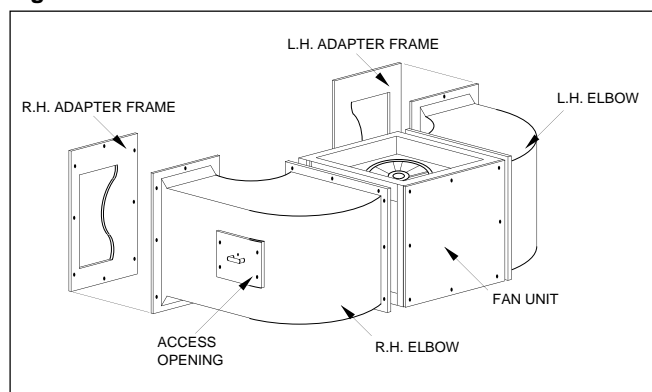
Unpack the induced draft fan and assemble the side panels as required. Barometric damper may take the place of the rear panel and should not be installed at this time.

IMPORTANT

Installation can be accomplished easily with two men and the use of braces under the unit insuring correct alignment. One man should be positioned between fan and back section.

Secure the fan unit to the smokehood elbows using 1/4" x 3/4" bolts, nuts and washers. Make sure the rear panel (flanged section) faces away from boiler and that the elbow openings line up with the fan openings. See Figure No. 17 for assembly less shutter dampers or barometric damper.

Figure No. 17



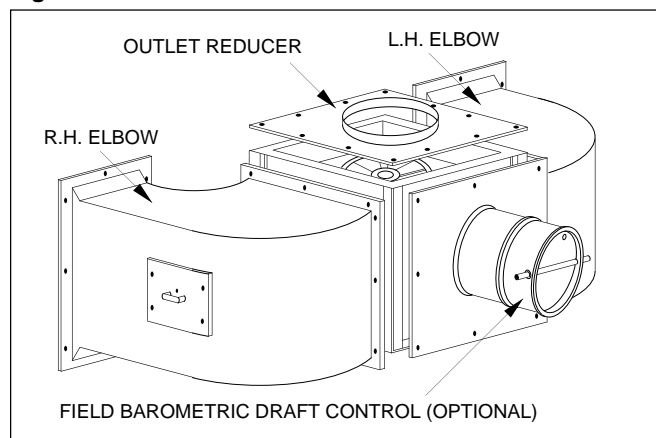
4500A BOILER INSTALLATION INSTRUCTIONS

For Barometric Damper Installation:

Tighten the fan unit to both elbows. Align elbows to the adapter frames and tighten all nuts. Seal all joints with RTV silicone.

Mount barometric damper to the rear section of the fan unit. See Figure No. 18.

Figure No. 18



For Shutter Damper Installations:

Add both the damper operator motor bracket and the main damper spindle support bearings to fan unit and then tighten unit to both elbows. See Figure No. 19.

Align elbows to the adapter frames and tighten all nuts. Seal all joints with RTV silicone.

Slide main damper spindle between the two support bearings with the flat side facing the left hand elbow and insure free rotation of same. Slip both the pilot plate and the crank arm onto the ends of the main damper spindle, but do not tighten. Refer to Figure No. 20.

Place the dampers in the left hand elbow in the closed position (linkage down), then tighten pivot plate set screw against flat of spindle.

With left hand dampers closed, close right hand dampers and tighten crank arm to main damper spindle. Work assembly to insure complete and free travel.

IMPORTANT

If any restriction to movement is observed, corrective action must be taken to insure free operation. (Linkage alignment is normally the cause of friction.)

Connect the drive linkage between the damper motor and the pivot plate, see Figure No. 19. With the damper blades closed, the drive linkage should be in the same position as illustrated. (It may be necessary to power the control and reposition bracket on the damper motor to achieve this.)

20. SMOKEHOOD (INDUCED DRAFT, AUBURN)

IMPORTANT

There are two ways this smokehood and fan arrangement is supplied. Either with a single blade discharge damper or with two barometric dampers.

A piece of insulating rope 1/4" thick and 56" long must be affixed to both the right hand (3335) and the left hand (3336) smokehood adapters prior to installation.

NOTE: A small amount of furnace cement placed randomly in the groove will hold the rope in place long enough to mount adapter.

Line up the appropriate frame with the opening in the back section and secure in place using (3) 7/16" x 2-1/2" machine bolts with a single washer (located in X3 box).

Repeat same procedure for second adapter frame and seal both back section using RTV silicone.

Remove cleanout cover plates from the smokehood (69029). Loosely attach the 5/16" x 1" square head machine bolts, nuts and washers to the smokehood flanges. Place smokehood up against adapter frames and engage bolts with the slots in the frames.

Assemble the bolts to the top and bottom of the smokehood through the cleanout cover opening. Add the nuts and washers to the outside of the flange. Tighten the remaining bolts, nuts and washers around both flanges.

NOTE: For units less barometric dampers, replace cleanout covers.

Support the fan housing and motor unit in position against the smokehood matching the holes in the thimble with 1/2" studs. Tighten fan in place. See Figure No. 21.

Additional support is required for this unit and can be accomplished with a stand leg.

Cut a piece of 2" pipe (not furnished) of sufficient length to insure when threaded into the coupling portion of the stand leg plate, the support of the fan will rest on the leg. See Figure No. 22.

4500A BOILER INSTALLATION INSTRUCTIONS

Figure No. 19

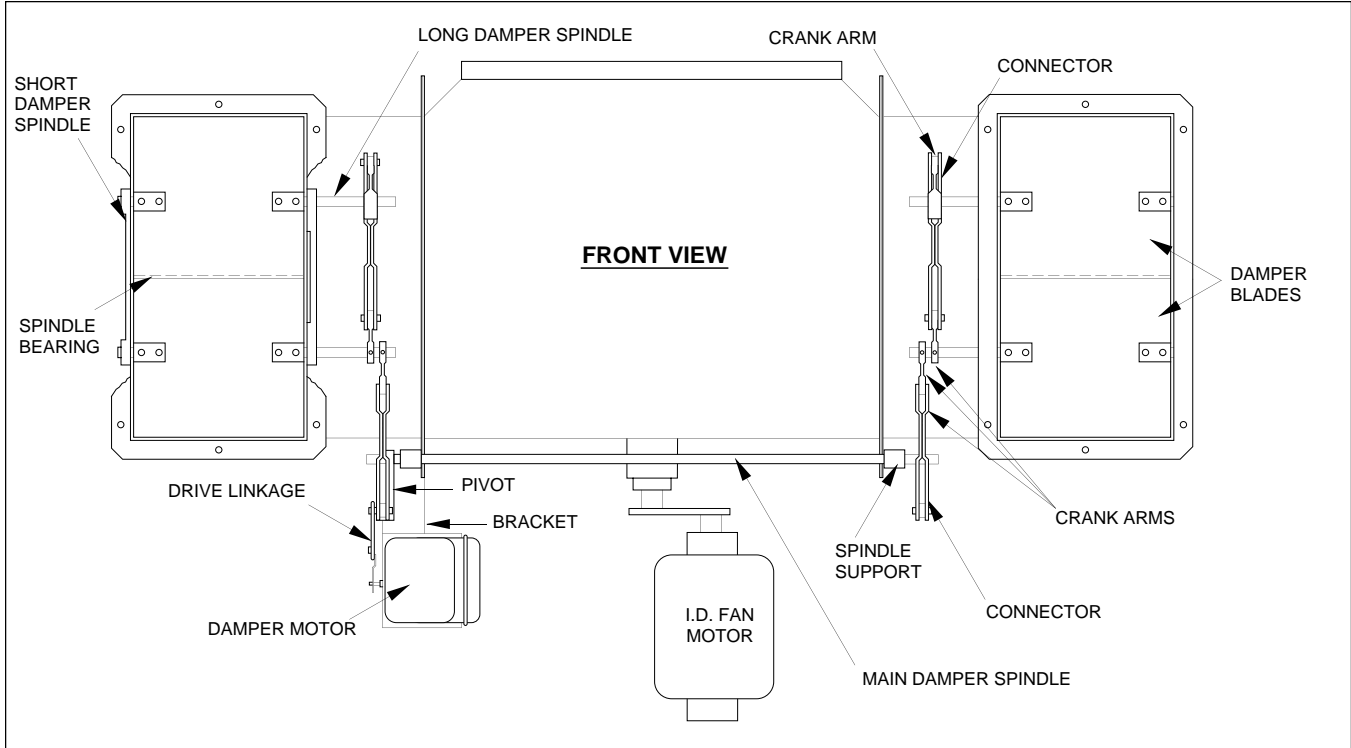
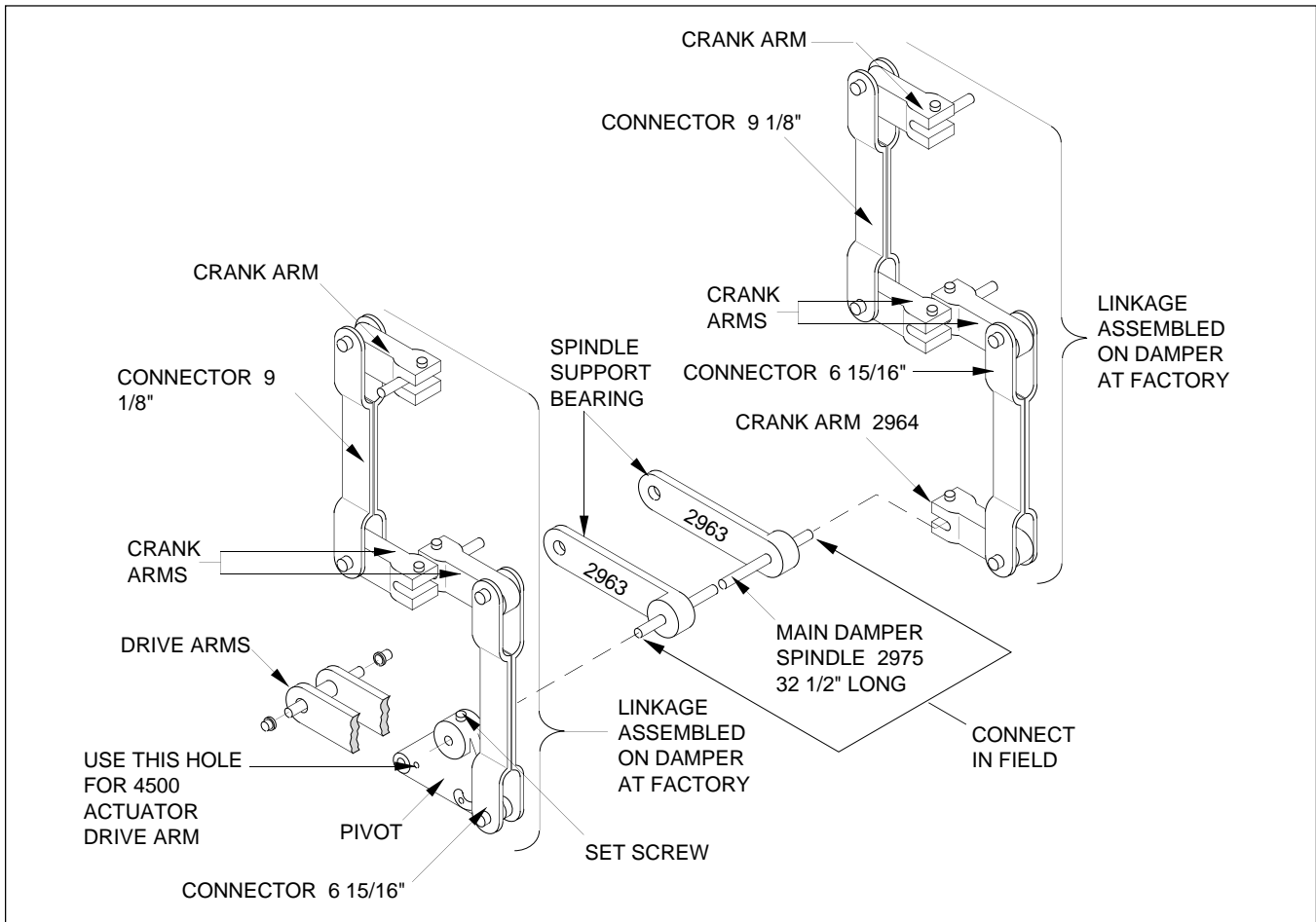


Figure No. 20



4500A BOILER INSTALLATION INSTRUCTIONS

Figure No. 21

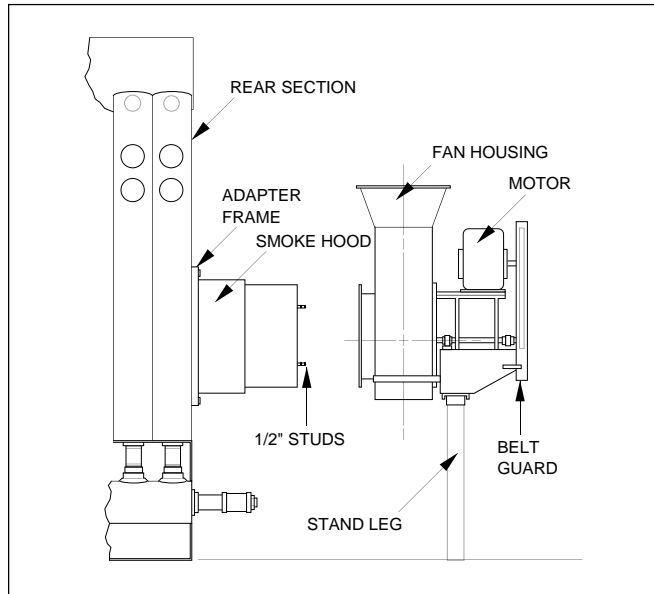


Figure No. 22

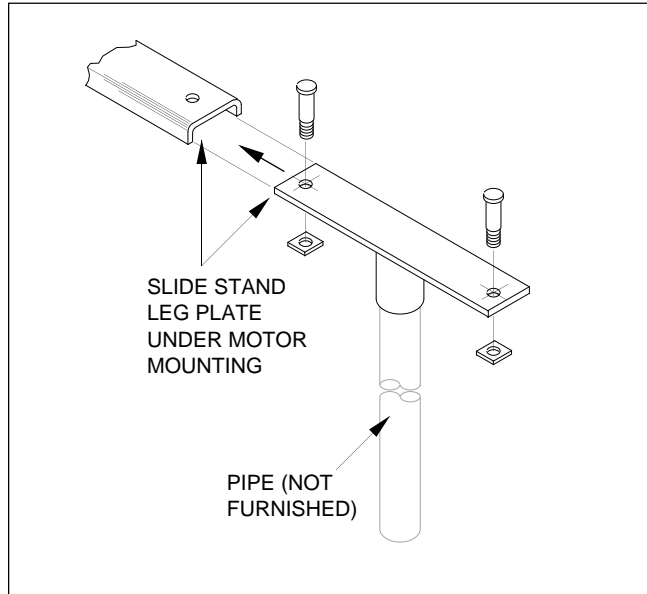


Figure No. 23

CAT. NO.	DESCRIPTION
DM-1	P.I. motor actuator 24v.
3276	Damper crank for Whitty damper assembly
D3-600	Crank arm for motor actuator, adjacent radius for 1 ¹⁶ / ₁₃ " to 2 ⁷ / ₈ "
D5-600	5/ ₁₆ " - 24 dia. stud-use with D3-600 crank arm
D5-602	1/ ₄ " - 28 dia. stud-use with D3-601 crank arm
D5-100	Push rod, 5/ ₁₆ " dia. x 48" long plated steel shaft

For Single Blade Discharge Damper Installations:

Turn the actuator (DM-1) upside down and fasten the mounting bracket to it using (3) 1/4" x 5/8" square head bolts. Insure when actuator is mounted fan, the red position indicator is facing away from boiler.

Figure No. 23 illustrates the actuator and its hardware and should be used in conjunction with printed manufacturers literature supplied with the actuator itself.

Although there is a wide variety of fan discharge positions available, we are only going to illustrate (4). See Figure No. 24.

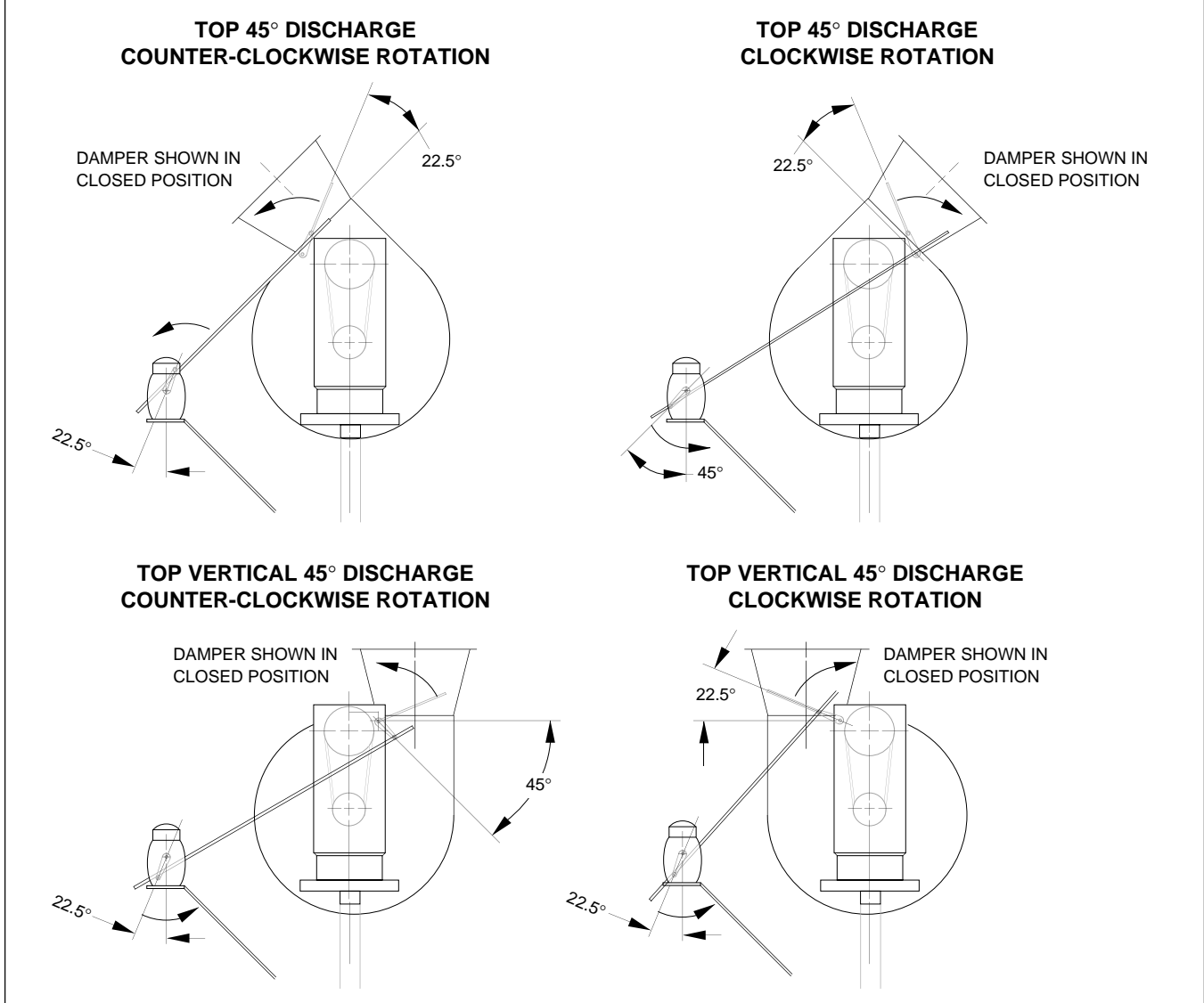
NOTE: For various discharge positions, different crank arm and linkage settings are required.

Assemble one ball joint connector to the damper blade crank shaft and one to the D3-600 crank arm. Connect crank arm to DM-1 actuator and adjust position to agree with Figure No. 24.

Connect push rod (D5-100) between the actuator crank arm and the damper crank arm. Tighten the 5/16" set screws (D5-600) to lock push rod in position as illustrated.

4500A BOILER INSTALLATION INSTRUCTIONS

Figure No. 24



For Barometric Damper Installations:

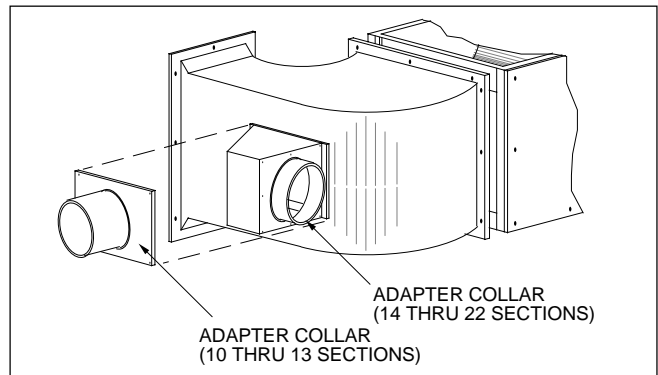
Two different adapters are required for this boiler, one type for 10-13 section boilers, and another for 14-22 section boilers. See Figure No. 25.

Adapters mount to the same studs in the smokehood that the cleanout covers did. A single nut and washer should be used for each stud.

IMPORTANT
The opening for the barometric dampers must face away from the fan.

Mount the barometric damper to the adapter using the hardware and literature supplied by the manufacturer.

Figure No. 25



4500A BOILER INSTALLATION INSTRUCTIONS

Figure No. 26

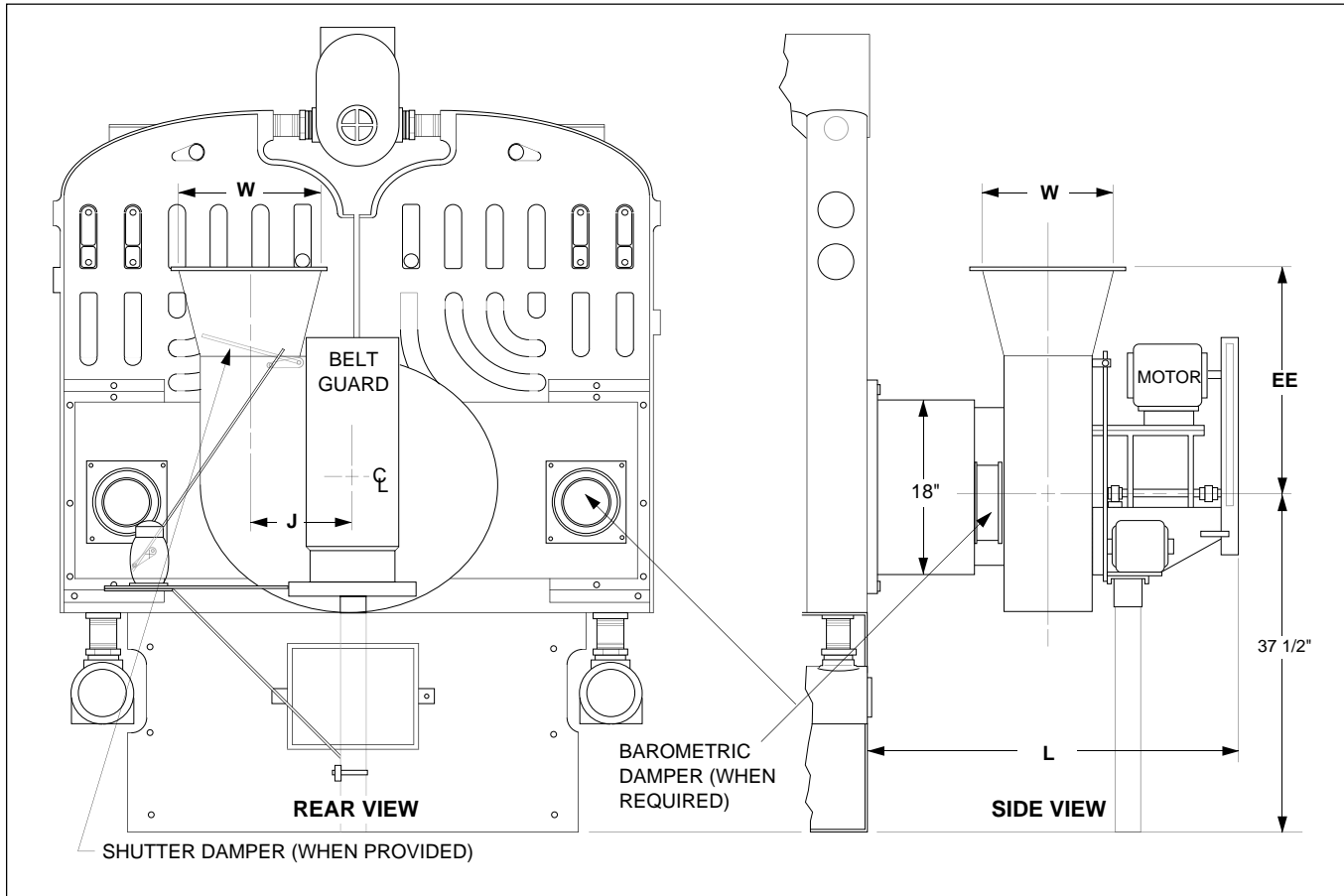


Figure No. 26 illustrates a complete Auburn Fan installation. Although both barometrics and single dampers are illustrated together, normal application is either one or the other.

Table 5 - 4500A Auburn Fan Dimensions

BOILER NO.	J	L	W	EE
4500A 10-13	11 ³ / ₈	42	16	21
4500A 14-22	13 ¹ / ₄	46 ¹ / ₄	18	25

21. AUXILIARY FLUE GAS VENT

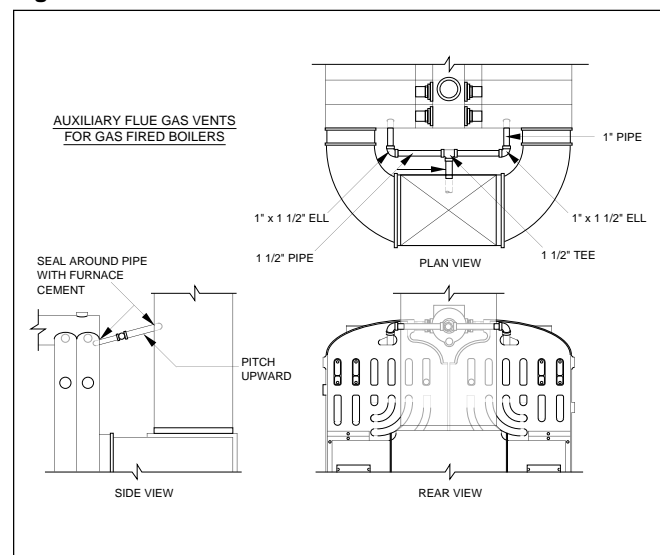
IMPORTANT

Code requires the use of auxiliary gas vents on all gas fired boilers where the design of the boiler allows any possible accumulation of unburned fuel gas. See Figure No. 27.

The back section is designed for the use of auxiliary gas vents. A thin membrane must be knocked out with a ball peen hammer. See Figure No. 26 for correct location of knockouts.

Piping (not furnished) should be installed in a similar manner as that illustrated in Figure No. 27.

Figure No. 27



4500A BOILER INSTALLATION INSTRUCTIONS

22. STEAM TRIM

Standard trim for steam boilers consist of: a steam gauge, (2) or (3) pressure controls, 1/4" pipe tree for controls and a 15 PSIG A.S.M.E. side outlet safety valve.

Also included is a low water cutoff with pre-cut ferrous piping and special hydronic fittings for ease of assembly and alignment. The correct location of these hydronic crosses also allow complete access to all piping for cleaning purposes. See Figure No. 28 for correct location of trim.

IMPORTANT

Direct safety valve discharge to a location where it will not contact or injure personnel from the discharge of this valve, whether intentional or accidental.

23. WATER TRIM

Standard trim for water boilers consist of: a 6" pressure-altitude gauge, remote reading dial thermometer, (2) or (3) temperature controls, dip tube, air removal fittings, manual vent valve and a 40 PSI A.S.M.E. relief valve.

A low water cutoff is also standard equipment along with pre-cut ferrous piping and special hydronic fittings for ease of assembly and alignment. The correct location of these hydronic crosses also allow complete access to all piping for cleaning purposes. See Figure No. 29 for correct location of trim.

IMPORTANT

Direct relief valve discharge to a location where it will not contact or injure personnel from the discharge of this valve, whether intentional or accidental.

24. CLEANING BOILER WATERWAYS

Steam Boilers:

Assembly of boiler must be completed before cleaning. The burner must be installed and made operational with operating, limit and safety controls functional. Combustion should be adjusted to prevent sooting of boiler flues. Final burner adjustment should be made after cleaning. System piping should not be connected prior to cleaning and all unused boiler tappings must be plugged.

Boilout solution should be mixed as follows:

- (1) Lb. caustic soda
- (1) Lb. trisodium phosphate] per 50 gallons boiler water

Refer to Table 6 for boiler water content and Figure No. 30 for a suggested blow down piping arrangement.

Mix chemicals to form a concentrated solution.

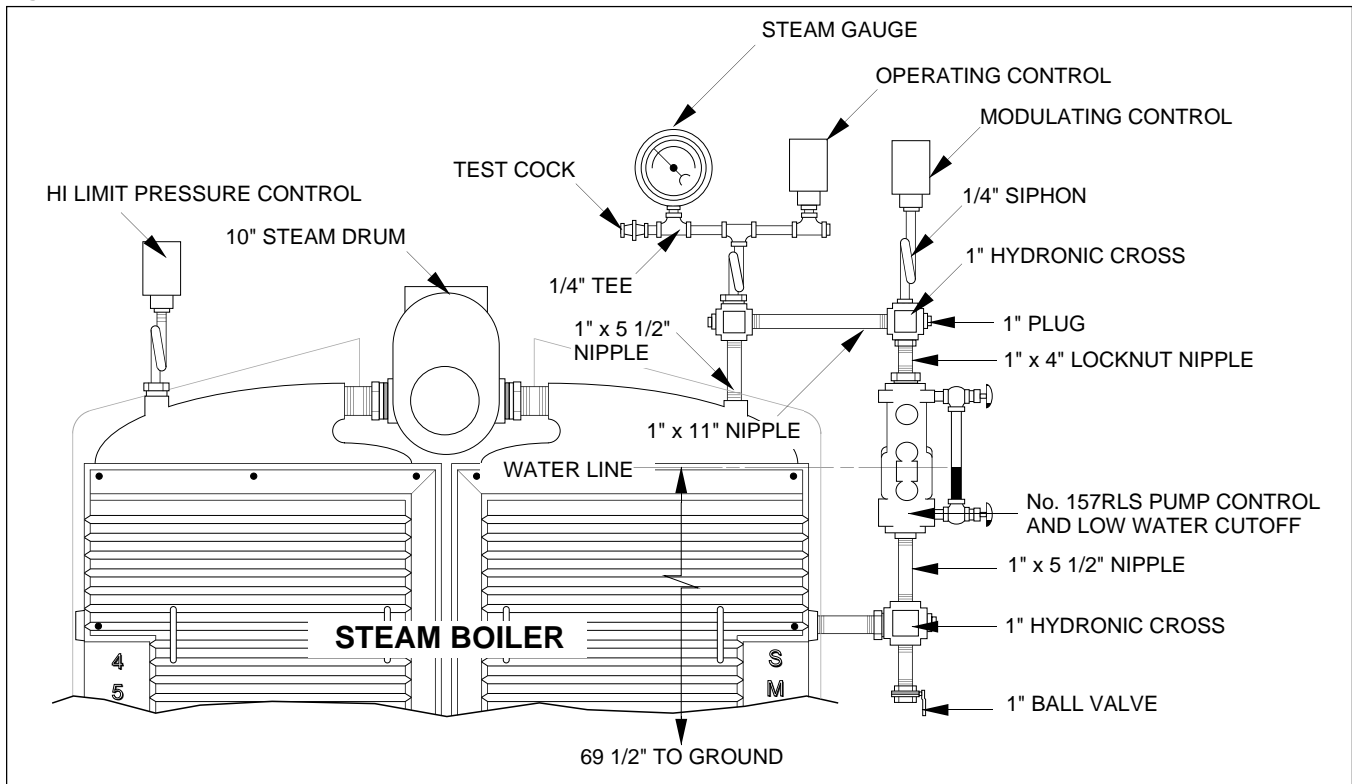
Remove plug from tapping on highest point on the boiler.

If no other opening is available, the safety valve may be removed, in which case the valve must be handled with extreme care to avoid damaging it.

CAUTION

Avoid clothing, skin or eye contact with boilout chemicals. If contact occurs, flush with large quantities of water.

Figure No. 28



4500A BOILER INSTALLATION INSTRUCTIONS

Replace the plug or safety valve and fire boiler intermittently for at least (5) hours. Maintain (0-2) PSIG steam pressure during boilout. Blow down boiler intermittently through lower drain valves to remove sediment. Maintain water level at normal water line (69-1/2" from floor).

If boiler is not clean, repeat cleaning procedure or clean boiler using a skimmer tapping as follows:

Connect temporary piping to the (2") rear tapping on the left hand side of the supply drum.

IMPORTANT
Monitor boiler pressure constantly during boilout. Do not allow pressure to exceed (15) PSIG.

CAUTION
Be sure water is discharged to an open drain or other location that insures no danger to personnel. Do not install a valve in this piping.

Stop firing burner and allow boiler to cool below 120°F and drain. Flush the boiler interior with clean water introduced by a hose into the top header, when the flushing is complete, close drain valves and fill boiler with clean water.

Fill the boiler until water reaches the top of the gauge glass. Add chemicals at the same rate as previously described.

Figure No. 29

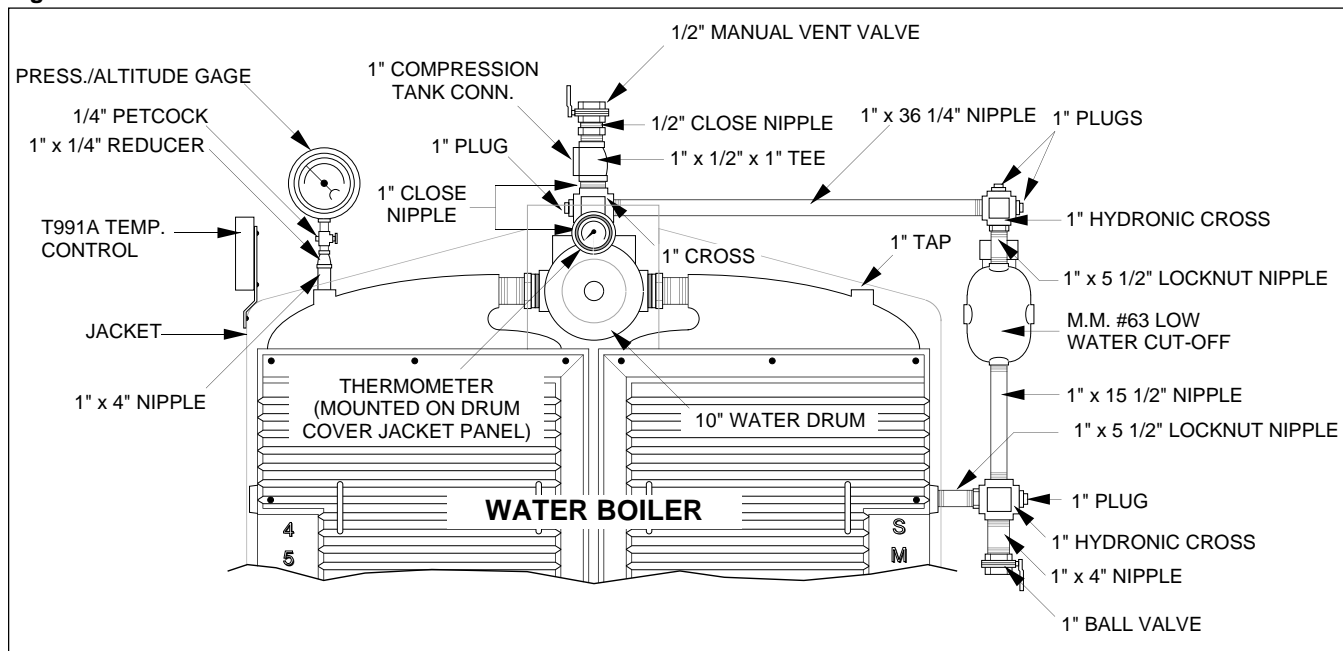


Figure No. 30

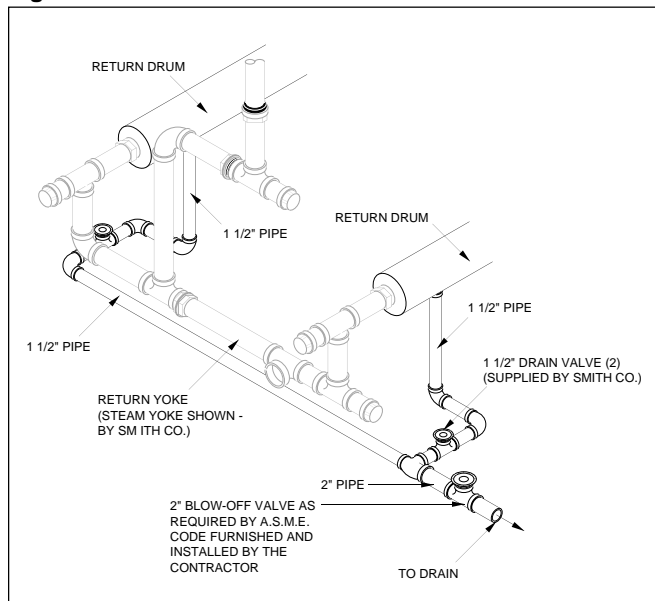


Table 6

BOILER WATER CONTENT		
NUMBER SECTIONS	STEAM (GALS.)	WATER (GALS.)
10	151	227
11	164	248
12	177	268
13	190	288
14	203	308
15	216	328
16	229	349
17	242	370
18	255	390
19	268	410
20	281	431
21	294	451
22	301	471

4500A BOILER INSTALLATION INSTRUCTIONS

Start the burner and operate sufficiently to boil the water without producing steam pressure for about (5) hours. Add water to boiler at a rate which allows a steady trickle of water to flow from the skimmer piping. Continue this slow boiling and trickle of overflow for several hours or until discharge water is clear.

Stop firing the burner and allow to cool to 120° and drain boiler. Wash the water side of boiler thoroughly using a high-pressure water stream.

Remove temporary piping and fill boiler with clean water to normal water level. Replace safety valve and connect permanent piping.

Water Boilers:

Normally, cleaning of water boilers is unnecessary unless boiler or system contamination is known to be unusually heavy.

If cleaning is necessary it should be performed as outlined under "Steam Boilers" with the following changes:

- 1) Include system water when determining amount of boilout solution.
- 2) Operate circulator during boilout.
- 3) Maintain system temperature between 160° and 200°F.
- 4) If portions of heating system are non-drainable, refill system with water and operate circulator to flush those sections. Drain and refill system with clean water.

CAUTION

Monitor boiler pressure constantly during boilout. Do not allow pressure to exceed 40 PSIG.

25. JACKET INSTALLATION

The complete flush jacket should be installed now that the boiler assembly and piping are completed. This is covered in a separate booklet "Jacket Installation".

26. MAINTENANCE SCHEDULE

The following instructions are offered for best performance of the boiler and burner:

- A. Keep boiler fireside surfaces clean. Cleaning should be done at least once annually. Flue temperatures above 600°F indicate cleaning may be necessary.
- B. An unstable waterline or system steam hammer indicates contaminated boiler water. Blow down boiler to remove contamination. Excessive blow down should be avoided since this can reintroduce contamination to the boiler. Contaminated boiler water eventually leads to scaling, pluggage and possible section damage.
- C. Refer to Table 6 for recommended equipment check list.

27. SAFETY

CAUTION

Steam Boilers: Do not place cold boilers in service on a hot steam line or severe damage may occur to boiler and piping. Keep cold boiler valved off line, fire until boiler reaches line pressure before bringing on line. Steam entering a cold boiler causes steam hammer. For boilers not valved off, the system should have an overflow installed to prevent idle boiler from flooding. If this is not done, cold boiler must be heated to near steaming condition (212°F) and then drop water level to normal.

CAUTION

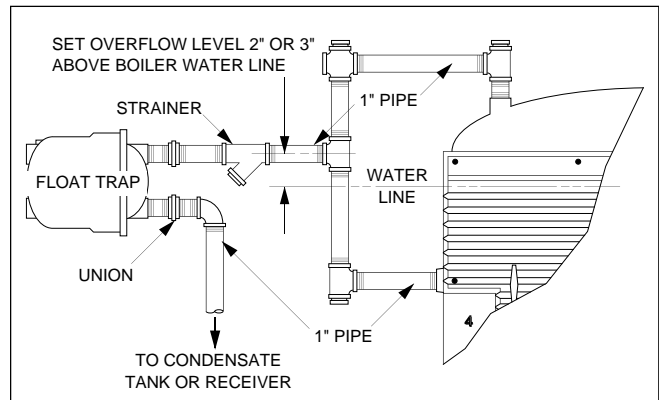
Water Boilers: Avoid thermal shock of water boilers. Establish water circulation through the boiler before starting burner. Where hot standby is required, special piping and operation procedures are required. Consult your Smith representative.

28. PUTTING COLD BOILER INTO SERVICE OR CHANGING WATER LEVEL UNDER STEAM PRESSURE

The following procedure will prevent "Steam Hammer" caused by the introduction of system steam into the piping and steam space of a cold boiler:

- 1) Close valves on supply, return and equalizing piping so as to isolate the cold boiler from the system.
- 2) If water level adjustment is necessary, add or draw off water to desired level.
- 3) Start the burner and allow steam pressure to build up to equal system steam pressure.
- 4) Open return valve to allow feed water to enter the boiler. Then open the supply valve slowly until boiler pressure and system pressure are equal and the valve fully open. Then open equalizing valve, if one has been supplied.
- 5) The boiler is now "On Line" and should be allowed to operate on automatic control.

Figure No. 31



SUGGESTED PIPING FOR OVERFLOW TRAP TO PREVENT FLOODING OF IDLE BOILERS IN MULTIPLE BOILER INSTALLATIONS WITH INDIVIDUAL WATER LEVEL CONTROL AND NO EQUALIZING CONNECTIONS.

WARNING

Any appliance that burns natural gas, propane gas, fuel oil, wood or coal is capable of producing carbon monoxide (CO). Carbon Monoxide (CO) is a gas which is odorless, colorless and tasteless but is very toxic. If your Smith boiler is not working properly, or is not vented properly, dangerous levels of CO may accumulate. CO is lighter than air and thus may travel throughout the building. **BRIEF EXPOSURE TO HIGH CONCENTRATIONS OF CO, OR PROLONGED EXPOSURE TO LESSER AMOUNTS OF CO MAY RESULT IN CARBON MONOXIDE POISONING. EXPOSURE CAN BE FATAL AND EXPOSURE TO HIGH CONCENTRATIONS MAY RESULT IN THE SUDDEN ONSET OF SYMPTOMS INCLUDING UNCONSCIOUSNESS.**

Symptoms of CO poisoning include the following:

dizziness	vision problems	shortness of breath
headaches	loss of muscle control	unclear thinking
nausea	weakness	unconsciousness

The symptoms of CO poisoning are often confused with those of influenza, and the highest incidence of poisoning occurs at the onset of cold weather or during flue season. A victim may not experience any symptoms, only one symptom, or a few symptoms. Suspect the presence of carbon monoxide if symptoms tend to disappear when you leave your home.

The following signs may indicate the presence of carbon monoxide:

- Hot gases from appliance, venting system, pipes or chimney, escaping into the living space.
- Flames coming out around the appliance.
- Yellow colored flames in the appliance.
- Stale or smelly air.
- The presence of soot or carbon in or around the appliance.
- Very high unexplained humidity inside the building.

If any of the symptoms of CO poisoning occur, or if any of the signs of carbon monoxide are present, **VACATE THE PREMISES IMMEDIATELY AND CONTACT A QUALIFIED HEATING SERVICE COMPANY OR THE GAS COMPANY OR THE FIRE DEPARTMENT.** To reduce the risk of CO poisoning, have your heating system “tuned up” by a licensed heating contractor or the gas company - preferably before each heating season. Also, have the service company check your chimney or vent pipes for blockage. Your home should also be adequately ventilated, particularly if you have insulated your home.

ONLY QUALIFIED, LICENSED SERVICE CONTRACTORS SHOULD PERFORM WORK ON YOUR SMITH BOILER.

In the interest of product improvement, Smith reserves the right to make changes without notice.

WARNING

Install, operate and maintain unit in accordance with manufacturer's instructions to avoid exposure to fuel substances or substances from incomplete combustion which can cause death or serious illness. The State of California has determined that these substances may cause cancer, birth defects, or other reproductive harm. Also, install and service this product to avoid exposure to airborne particles of glasswool fibers and/or ceramic fibers known to the State of California to cause cancer through inhalation.

Table 7
PERIODIC TESTING
RECOMMENDED CHECK LIST
(See Manufacturer's Instructions)

Item	Frequency	Accomplished By	Remarks
Gauges, Monitors, & Indicators	Daily	Operator	Make visual inspection and record readings in log
Instruments & Equipment Settings	Daily	Operator	Make visual check against factory recommended specifications
Firing Rate Control	Weekly Semi-annual	Operator Service Technician	Visual inspection Verify factory settings — check with combustion test instruments
Igniter Fuel Valves			
1. Pilot Valves	Weekly	Operator	Make visual inspection, check flame signal strength if meter fitted (see Comb. saf. Con.)
2. Main Gas Valves	Monthly	Operator	Open limit switch — make audible and visual check — check valve position indicators — check fuel meters
3. Main Oil Valves	Annual	Service Technician	Perform leakage tests — refer to manufacturer's instructions
Combustion Safety Controls			
1. Flame Failure	Weekly	Operator	Close manual fuel supply for (1) pilot (2) main fuel cock and /or valve(s) — check safety shutdown timing — log
2. Flame Signal Strength	Weekly	Operator	If flame signal meter installed read and log —for both pilot and main flames, notify service organization if readings are very high, very low or fluctuating — Refer to manufacturer's instructions
3. Pilot Turn Down Tests	As required/Annual	Service Technician	Required after any adjustments to flame scanner mount or pilot burner — verify annually
4. Refractory Hold in	As required/Annual	Service Technician	See Pilot Turn Down Test
Low Water Fuel Cutoff and Alarm	Daily/Weekly	Operator	Refer to manufacturer's instruction
High Limit Safety Control	Annual	Service Technician	Refer to manufacturer's instruction
Operating Control	Annual	Service Technician	Refer to manufacturer's instruction
Low Draft, Fan & Air Pressure interlocks	Monthly	Operator	Refer to manufacturer's instruction
Atomizing Air/Steam interlock	Annual	Service Technician	Refer to manufacturer's instruction
High & Low Gas Pressure interlocks	Monthly	Operator	Refer to manufacturer's instruction
High & Low Oil Pressure interlocks	Monthly	Operator	Refer to manufacturer's instruction
High & Low Oil Temperature interlocks	Monthly	Operator	Refer to manufacturer's instruction
Fuel Valve interlock Switch	Annual	Service Technician	Refer to manufacturer's instruction
Purge Switch	Annual	Service Technician	Refer to manufacturer's instruction
Burner Position interlock	Annual	Service Technician	Refer to manufacturer's instruction
Low Fire Start interlock	Annual	Service Technician	Refer to manufacturer's instruction
Automatic Change Over Control (Dual Fuel)	At least Annual	Service Technician	Refer to manufacturer's instruction
Safety Valves	As required	Operator	In accordance with procedure in Section VI A.S.M.E. Boiler Code Recommended Rules for Care and Operation of Heating Boilers
Inspect Burner Components	Semi-annual	Service Technician	Refer to manufacturer's instruction